



Webex on Flip

Samsung Flip with Cisco Webex Room Kit Mini

Future of work. On display.

Collaboration is the foundation for success in today's fast-paced business world. Industry leaders Samsung and Cisco have come together to transform the modern workplace with Webex on Flip. The partnership unites Cisco's innovative Webex collaboration platform with leading Samsung signage technology, providing a seamless, integrated meeting experience.

Interactive features make the Flip a powerful collaboration tool anytime, anywhere. And when combined with Cisco's leading video conferencing technology, people can come together like never before whether in a meeting room or working remotely from multiple locations. This is the future of work, on display.

Highlights

- Enable flexible utilization of both video conferencing and digital flipchart as needed
- Utilize useful features for whiteboarding including pen-to-paper-like writing experience, various edit tools
- Foster more productive and engaging collaboration in any business setting to get things done
- Facilitate smoother video conferencing through crystal-clear audio and detailed picture quality
- Use together with Webex Teams to support a better workflow
- Share and source content from multiple connected devices

SAMSUNG

Cisco Webex

Future of work. On display.

Experience integrated meeting solution



Why Webex on Flip?

By aligning its industry-best visual display technologies with Cisco's market-leading video collaboration solutions, Samsung's professional offerings transform the modern meeting space. Today's professionals cannot afford to lose valuable time by struggling with complicated technology. The Samsung and Cisco solutions eliminate these challenges through a convenient and intuitive operational flow. Bringing together a comprehensive suite of features which meets the needs of people who want to use a digital flipchart rather than analog to upgrade their meeting environment. Webex on Flip unites Samsung's innovative interactive digital flipchart technology and Cisco's advanced meeting solution to enable more accessible meetings and creative collaboration.

Cisco Webex Room Kit



Webex Room Kit Mini



Samsung Flip



Flip 55"



Flip 65"

What is Cisco Webex Room Kit Mini?

The Cisco Webex Room Kit Mini is a compact video conferencing and collaboration device optimized for huddle space and small meeting rooms. Combined with a flat-panel displays it brings people together to collaborate across any distance. Equipped with multiple sensors and AI-power features Cisco Webex Room Kit Mini provides intelligent ease of use to allow you to focus on your meeting, and support your needs whether it is to share a presentation, join an audio or video conference or create content together with your team members locally in the room or remotely. Combined with the Webex Teams application you can easily move your meeting between your personal device and the Room Kit Mini for a better huddle space experience.

Features

Cisco Webex



Smart meetings

Intelligent camera and audio solutions secure always optimal framing with high quality video, suppress background noises for optimal audio experience.



Smart presentations

Support for both wired and wireless sharing and 4K content make for effective presentations.



Smart integrations

Monitor meeting space utilization, Integrate with other facility service for a better workplace experience.



Access to Webex service

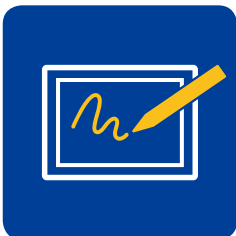
Through Room Kit Mini you can access Webex calling, Webex Meetings, Whiteboard service, Webex Teams spaces, Remote Management and Room Utilization analytics.

What is Samsung Flip?

The Samsung Flip is an intuitive and easy-to-use digital flipchart for any meeting environment, offering enhanced collaboration capabilities in an easy UI with a host of features and tools. Meetings are made smarter through simple notation modes, flexible image editing, comprehensive connectivity options and screen sharing capability, allowing teams to work smarter, faster and better.

Features

SAMSUNG



Pen & paper annotation

InGlass technology ensures a smooth and familiar pen-to-paper-like writing with no delay, while users can easily erase drawings with a finger or palm swipe.



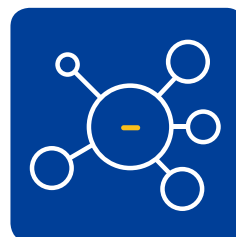
Intuitive usability

Write on any background source without affecting work behind the original layer, scroll through up to 20 pages and merge any image to the roll at the click of a button.



Convenience

Effortless presentations supported by any web browser, embedded versatile templates as well as a document viewer without additional PC.



Powerful connectivity

USB, HDMI, NFC and screen mirroring capabilities for versatile connectivity, along with screen sharing and meeting recap distribution.

Samsung and Cisco Webex offer solutions for smarter collaboration

Samsung and Cisco Webex together provide businesses with optimal meeting room solutions to create a connected and collaborative experience like never before. With Webex on Flip, all users will have a smooth conference experience in crisp, clear clarity. Collaboration is the core focus of Webex on Flip, allowing multiple meeting participants to share the screen in real-time and create the most efficient meetings possible.

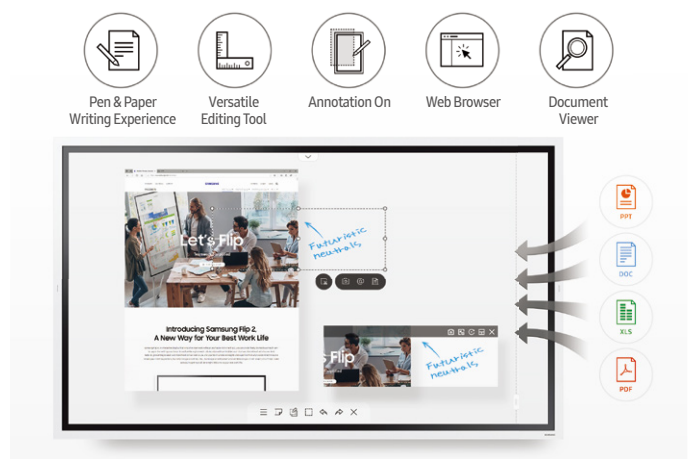


Perfect video conferencing solution

Cisco's Webex Room Kit Mini provides important video and audio-conferencing features for intelligent meeting experience. AI-powered capabilities provides a more convenient way of communicating by automatically positioning the face of meeting participants in the center of the screen, while background noise suppression ensures a smooth video conference experience with no delay.

Multi-way collaboration

Webex on Flip enables real-time, 2-way white boarding, allowing meeting participants in different locations to share the same screen and make edits. Users can utilize the annotation tool, delete or add content, all at the same time creating more efficient and collaborative meetings.




Wireless presentation

Webex on Flip allows users to utilize their own laptop or mobile with a wireless connection to easily share content with others. This ensures intuitive and convenient operation without the need for any additional hardware or technical difficulties.



Best-in-class digital flipchart

The Flip has a host of innovative features for any needs of meeting environment. Users can feel a smooth pen-to-paper-like writing experience, easily change content with the editing and annotation tools, all supported by access to a web browser directly on the Flip without any additional device and document viewer for comprehensive functionality.

Specification

Model	Webex Room Kit Mini	
		
Recommended meeting room type	Designed for huddle space, typical 5 seat scenario	
Collaboration capabilities	Video/Web conference Audio conference Wired/wireless presentation Multi-way Whiteboarding	
Intelligent meeting capabilities	Auto wakeup One Button to Join Optimal camera framing Background noise suppression Auto pairing of personal devices Voice Assistant	
Codec	Built-in HW components	Codec, Camera, Speakers, Microphones
	Compute / codec HW	Embedded appliance for video conferencing / H.323, SIP, Webex
	Software compatibility	Cisco Webex Room OS Cisco Collaboration Endpoint SW - CE 9.6 or later
	Video standards and definition	H.264 / up to 1080p60
	Audio standards and quality	G.711, G.722, G.722.1, G.729, AAC-LD, Opus / 20kHz Audio
	Content standards and definition	H.239, BFCP / up to 4kp5
	Wireless sharing	Webex Teams/Meetings App / up to 4kp5
Camera	Sensor resolution	4K UltraHD
	Field of view	120° Horizontal
	Zoom	2x (Digital)
Microphone	Built-in microphone array	
Speakers	Built-in full range speaker + dual woofers	
Connectivity	1x HDMI Video input 1x HDMI Video output 2x Ethernet 1x USB 2.0 A 1x USB 2.0 C 1x micro USB WiFi 802.11, 2.4GHz/5GHz	
Dimensions	19.7 x 3.2 x 3 inch 50.0 x 8.1 x 7.7 cm 7lb / 3.2 kg	

Collaboration platform	Webex Cloud Services
Voice calls / Audio conferencing	Webex Calling
Video and Web conferencing	Webex Meetings
Team collaboration, incl. Meetings / IM / Spaces / Whiteboarding / Files	Webex Teams
Users and Device Management and provisioning	Webex Control Hub
Scheduling and calendar integration	Webex Hybrid Calendar Service

Model	WM55R	WM65R		
				
Panel	Diagonal Size	55"	65"	
	Type	60Hz New Edge		
	Resolution	3,840 x 2,160 (Landscape)		
	Brightness (Typ.)	350 (without glass), 220 (with glass)		
	Contrast Ratio (Typ.)	4000:1 (Typ.) (without glass)		
	Viewing Angle (H/V)	178:178		
	Operation Hour	16/7		
Sound	Response Time (G-to-G)	8ms (Typ.)		
	Speaker Type	Built in Speaker (10W x 2)		
Connectivity	INPUT	VIDEO	(Basic) HDMI 2, (With Tray) HDMI 3	
		USB	(Basic) USB 1, (With Tray) USB 2, USB External (In/Out) 1	
	OUTPUT	Touch Out	(Basic) Touch Out 1 (USB Upstream Type), Audio Out 1 (With Tray) Touch Out 2, Audio Out 1, Screen Share (HDMI-Out) 1	
	INTERNAL	SENSOR	(Basic) Acceleration sensor (With Tray) Acceleration sensor, NFC	
	EXTERNAL	CONTROL	RS232C, LAN, WiFi/BT	
Touch	Type	InGlass™		
	# of Drawing	Multi writing up to 4		
	Touch Pen Type	Passive Pen with magnet		
	Object Recognition Range	2mm / 4mm / 8mm / 50mm, 1024 Level on Brush Mode		
Power	Touch Response Time	6.7ms		
	Type	Internal		
	Power Supply	AC100~240V 50/60Hz		
	Power Consumption	Max (W/h)	154	181.5
		Typical (W/h)	80	100
		Rating (W/h)	140	165
Stand-by (W/h)		0.5	0.5	
BTU (W/h)	525.14	618.915		
Mechanical Spec	Dimension (mm)	Set	1297.4(W) x 768.2(H) x 599(D)	1522.4(W) x 897.6(H) x 62.9(D)
		Package	1464(W) x 915(H) x 190(D)	1691(W) x 1055(H) x 198(D)
	Weight (kg)	Set	28.2	40.0
		Package	35.2	50.6
	Color	Light Gray		
	VESA Mount	400 x 400		
	Protection Glass	Yes		
	Stand Type	Moving Stand, Wallmount	No-Gap Wall Mount	
	Rotation	Yes	N/A with Flip No-Gap Wallmount (Available with rotation support 3rd party accessories sensor/portrait LUX already applied on Flip)	
	Power Cable Length	3m		
Accessory	Cover-Jack			
Operation	Operating Temperature	0°C - 40°C		
	Humidity	10-80%		
Feature	Key	Flip App		
	Special	H/W	Super Clear Coating, Temperature Sensor, Pivot Display, Clock Battery (168hrs Clock Keeping), Built in Speaker (10W x 2), WiFi Module Embedded	
		S/W	Flip S/W	
		Platform	Muse-M (Tizen 5.0)	
	Internal Player (Embedded H/W)	Processor	CA72 Quad (1.7GHz)	
		On-Chip Cache Memory	L1 (I/D) : 32KB / 32KB, L2 (Unified) : 1MB	
		Clock Speed	1.7GHz CPU Quad	
		Main Memory Interface	LPDDR4.1.6GHz 64bit 2.5GB	
		Graphics	2D & 3D Graphics Engine - Up to 1920x1080. 32bpp - Supports OpenGL ES™	
		Storage	8GB (2.65GB Occupied by O/S, 5.35GB Available)	
IO Ports		USB 2.0		
Operating System	Samsung Proprietary OS (VDLinux)			
Accessories	Included	Passive Pen(2), Power Cable, Touch Out Cable (USB upstream)		
	Optional	Stand	STN-WM55R	N/A
		Wallmount	WMN4277SE	WMN-WM65R
		Tray	CY-TF65BRC	CY-TF65BRC
		Specialty	Flip LUX	Flip LUX

About Samsung Electronics Co., Ltd.

Samsung Electronics Co., Ltd. inspires the world and shapes the future with transformative ideas and technologies. The company is redefining the worlds of TVs, smartphones, wearable devices, tablets, cameras, digital appliances, medical equipment, network systems, and semiconductor and LED solutions. For the latest news, please visit the Samsung Newsroom at news.samsung.com. For more information about Samsung SMART Signage, visit www.samsung.com/business or www.samsung.com/displaysolutions.

About Cisco

Cisco (NASDAQ:CSCO) is the worldwide technology leader that has been making the Internet work since 1984. Our people, products and partners help society securely connect and seize tomorrow's digital opportunity today. Discover more at thenetwork.cisco.com and follow us on Twitter at @Cisco.

Copyright © 2020 Samsung Electronics Co. Ltd. All rights reserved. Samsung is a registered trademark of Samsung Electronics Co. Ltd. Specifications and designs are subject to change without notice. Non-metric weights and measurements are approximate. All data were deemed correct at time of creation. Samsung is not liable for errors or omissions. All brand, product, service names and logos are trademarks and/or registered trademarks of their respective owners and are hereby recognized and acknowledged.

Samsung Electronics Co., Ltd.
416, Maetan 3-dong, Yeongtong-gu, Suwon-si, Gyeonggi-do 443-772, Korea

2020-02