



User Guide
R330733

Product revision

Software version: 1.0

Barco NV
President Kennedypark 35, 8500 Kortrijk, Belgium
Phone: +32 56.23.32.11
Fax: +32 56.26.22.62
Support: www.barco.com/en/support
Visit us at the web: www.barco.com

Printed in Belgium

TABLE OF CONTENTS

1. Welcome!	3
1.1 About the product	3
2. Getting started	5
2.1 Installing the NRC Client application	5
2.2 Starting the NRC Client application	5
3. NRC client GUI overview	7
3.1 Introduction	7
3.2 Toolbar	8
3.3 Sources view	9
3.4 Layouts view	10
4. Using NRC Client GUI	11
4.1 Selecting a composition window	11
4.2 Launching a source	11
4.3 Hiding a displayed source	13
4.4 Activating a layout	14
4.5 Controlling the source audio	15
5. Configuring NRC Client GUI settings	19
5.1 The Configuration Wizard	19
5.1.1 Start the Configuration Wizard	19
5.1.2 Room compositor configuration	19
5.2 The Settings dialog	22
5.2.1 Start the Settings dialog	22
5.2.2 Touch Panel Settings	23
5.2.3 General Settings	25
5.2.4 Compositors Settings	26
5.2.5 Sources Settings	29
5.2.6 ClickShare Base Unit Settings	31
5.2.7 Administrator Settings	33
5.2.8 License Settings	35
5.2.9 About	36
6. Web interface for the NRC	39
6.1 Pre-configured network settings	39
6.2 Starting the web interface	39
6.3 How to log in	40
6.4 Web interface — System settings	41
6.4.1 System settings — Network configuration	41
6.4.2 System settings — Resolve configuration	43
6.4.3 System settings — NTP settings	43
6.4.4 System settings — System access	44
6.4.5 System settings — Change log level	45
6.4.6 System settings — Upgrade system	45
6.5 Web interface — Configuration backup	46
6.5.1 Configuration backup — Logs	46
6.5.2 Configuration backup — Settings	47
6.6 Web interface — Change password	48
6.6.1 Change password in User mode	48
6.6.2 Change password in administrator mode	49
7. Important information	51
7.1 Legal disclaimer	51
7.2 Open source license information	51

Table of contents

A. NRC Client API	53
A.1 Introduction	53
B. Windows 8 setting	55
B.1 Windows 8 boot straight to the desktop	55
B.2 Setting network connection priority	55
C. Mobile device support	59
C.1 Supported Apps	59

1. WELCOME!

1.1 About the product

Introduction

Thank you for choosing the Barco Networked 4K Room Compositor (NRC) Client software (Barco part number: R330733 version 1.0).

The NRC Client software running on the client touch PC allows users to connect to the NRC Server software. It provides an intuitive touch-based graphical user interface that allows the user to:

- Detect and configure hardware devices (i.e. ClickShare Base Unit, NGS-D200, NGS-D220, NRC-200, etc...) and other miscellaneous settings;
- Select the relevant content on-screen via the Sources view;
- Adjust the layout by selecting the desired layout from the Layouts view;
- Control the source audio volume and mute.

1. Welcome!

2. GETTING STARTED

2.1 Installing the NRC Client application

How to install

1. Download the NRC Client GUI from the internet www.barco.com/NRC_Client on the tablet or your PC, using corporate WiFi.
Execute *NRC_1.0.6.9_Client_x64.exe*.
2. Once installed, connect to the wireless network of the local Access Point.

2.2 Starting the NRC Client application

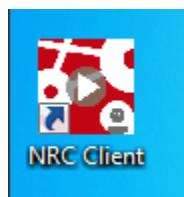
Starting the NRC Client application

The two methods of starting the NRC Client application are explained below.

Method one

- In windows, go to *Start > All Programs > Barco NRC > Client > NRC Client* and single-press **NRC Client**.

Method two



- Double-press **NRC Client** shortcut on your desktop.

Depending on how your system is configured, NRC Client GUI opens like presented below.

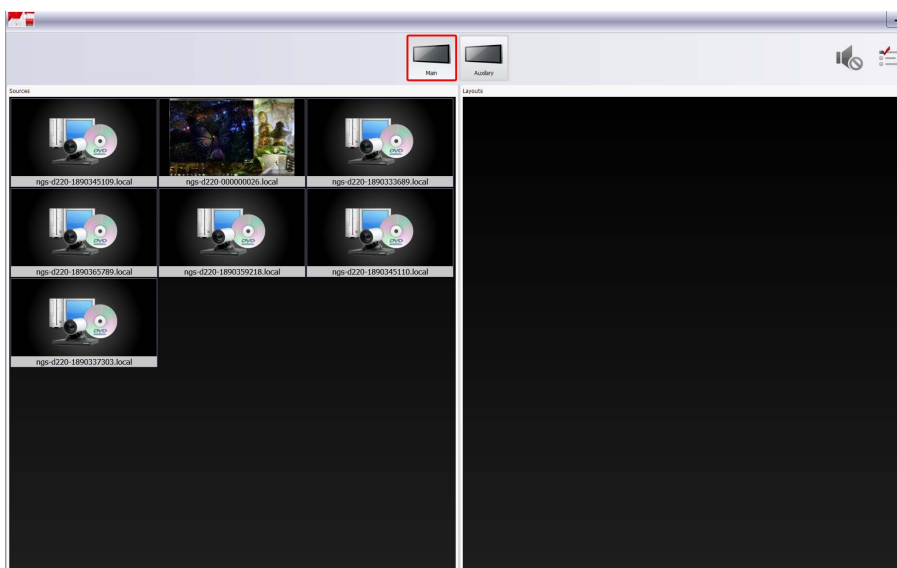


Image 2-1
NRC Client GUI: Main window

2. Getting started



By default, the NRC Client application automatically connects to its configured compositor PC.



Following message appears on the bottom-right window of the NRC Client GUI, if the NRC Client application is unable to connect to its configured compositor PC.



Image 2-2
NRC Client is not connected to server



To stop the NRC Client application, single-press the NRC Client icon in the Windows system tray and select Exit from the context menu.

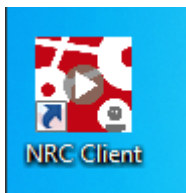


Image 2-3
Exiting the NRC Client application

3. NRC CLIENT GUI OVERVIEW

3.1 Introduction

Introduction

The NRC Client GUI is the main graphical user interface of the NRC solution. It provides an easy-to-use interface allowing you to perform various operations in a quick way. Using this GUI, you can perform the following tasks:

- Preview a source locally before showing it (moderation)
- Launch the available source(s) on multiple composition windows
- Activate an auto-layout
- Configure ClickShare Base Unit
- Connect to other compositor PCs
- Set the administrator login mode
- Create full system backup
- Control audio of the source

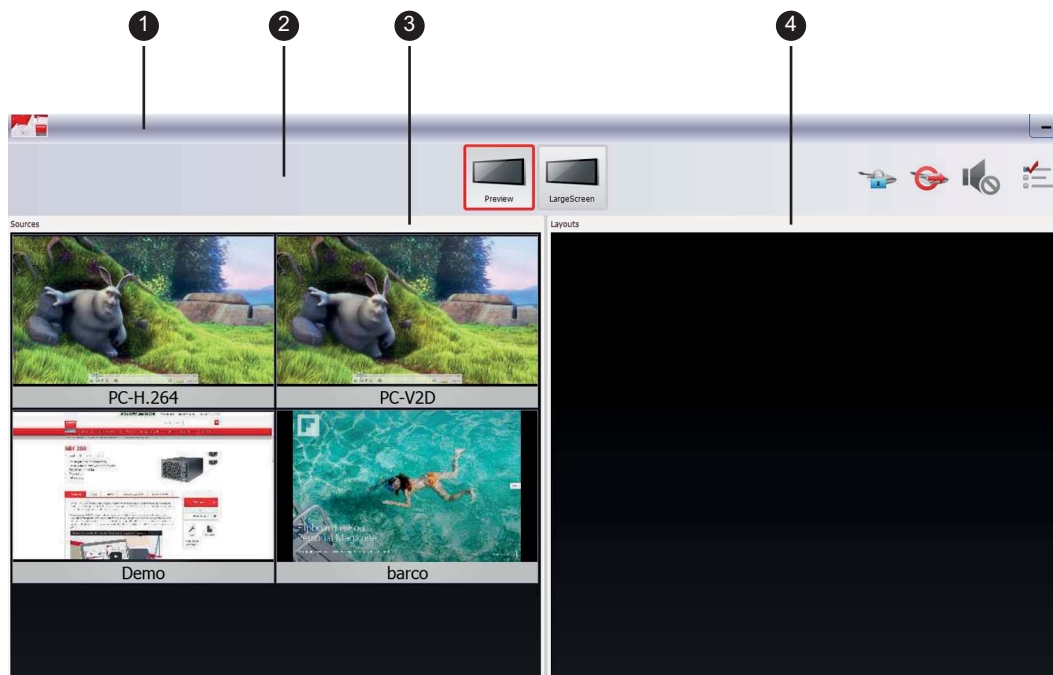



Image 3-1
NRC Client GUI (basic setup)

- 1 Header
- 2 Toolbar
- 3 Sources view
- 4 Layouts view

The header of this GUI shows the Barco logo, software name and minimize button. The minimize button  is used to reduce the current NRC Client GUI into a taskbar button.

3.2 Toolbar

Introduction

The toolbar on the NRC Client GUI is a user friendly tool with on-screen buttons (or icons) to get direct access to the supported features. Depending on the configuration setup, following toolbar buttons (or icons) become available.

The following view of the toolbar appears if the main composition or the auxiliary composition (non data-sharing composition) is selected.

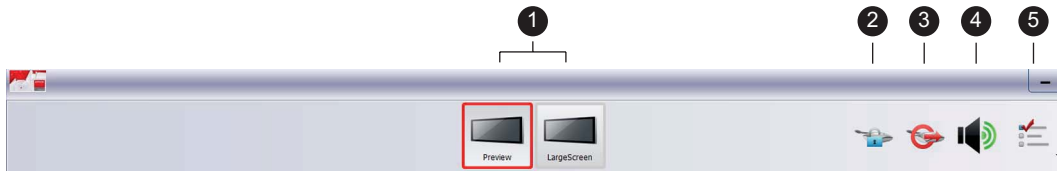


Image 3-2



Image 3-3

Toolbar

- 1 Composition buttons
- 2 Lock / Unlock button
- 3 Disconnect button
- 4 Mute/Unmute button
- 5 Configure button

The function of each button displayed on each view of the toolbar is explained below.

Composition buttons (1)

The composition buttons only appear when there is more than one composition configured in the system. Use these buttons to select the desired composition (= output) on the screen. The selected composition button is indicated by a red-color boundary on the toolbar.

Lock/Unlock button (2)




You are able to limit the available number of ClickShare sources. Use this button to lock the number of ClickShare sources, so that no new ClickShare sources can be added to the *Sources view*. Use this button to unlock and allow new ClickShare sources again.

Disconnect button (3)

Use this button to disconnect all available ClickShare sources at once. This provides a simple cleanup when different ClickShare sources are connected.

Mute/Unmute button (4)

Toggle button. Use this button to mute/unmute the audio of the displayed source(s) simultaneously. The button acts as a master and automatically activates whenever any source having audio is launched.

-  : Button inactive
-  : Source audio mute
-  : Source audio unmute

Configure button (5)

Use this button to access the *Configure* dialog of the NRC Client GUI.

3.3 Sources view

Introduction

The *Sources view* is a container for configured sources and ClickShare sources thumbnail view. It provides you an easy user interface to access the sources.

Depending both on how the source is configured and source content, the thumbnail view of configured sources shows the content on the NRC Client GUI. If there is no source content, the thumbnail view displays the default icon or an icon configured to that source.

Single-press the **source thumbnail view** to launch the according source content on the selected composition window. The source name (as given during the configuration) highlighted in grey-color label (when not active) is shown on the bottom of the thumbnail view.

The thumbnail view of ClickShare source appears inside the *Sources view* container as soon the ClickShare button is connected to the base unit. If the source is not displaying, the thumbnail view shows the default ClickShare icon. To display your ClickShare source on the composition window, press the **ClickShare button**. The displayed ClickShare source becomes available to other remote users and can be redistributed to other composition windows via NRC Client GUI, until it is removed by its owner by pressing the ClickShare button again or unplugging the ClickShare button (source content disappears approximately after 1 minute). The source name (highlighted in grey-color label) is the name of the user logged on to the source machine (e.g. laptop, mobile, tablet, etc...).

Use the navigation buttons on the Sources view to scroll up and down to the sources thumbnail view list.

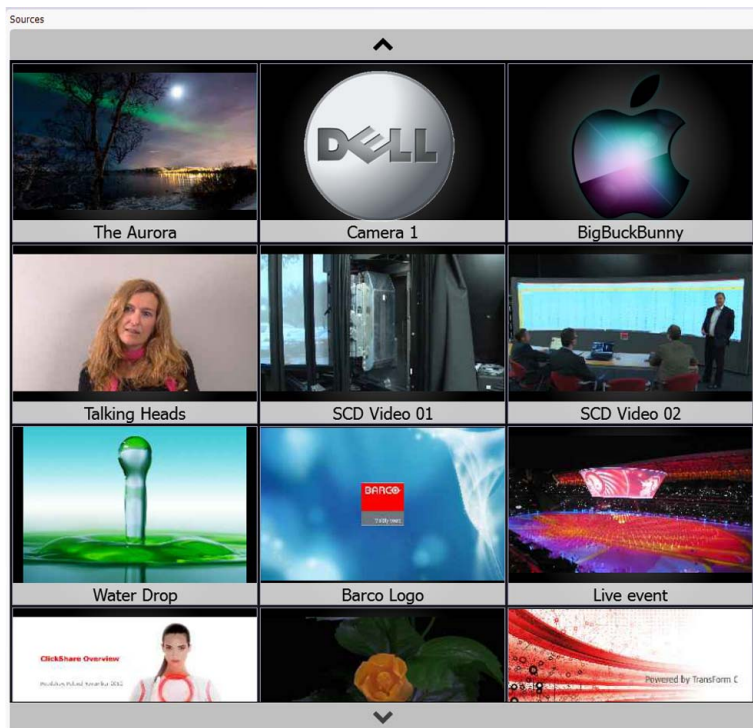


Image 3-4
Sources view

3.4 Layouts view

Introduction

The *Layouts view* is a container for system generated auto-layouts thumbnail view. The thumbnails view shows a preview of the generated layouts. Depending on the number of source(s) selected in the source view, the system automatically proposes different auto-layout(s) to the user – allowing flexibility to display the relevant content on the screen and to quickly change the way the sources are being shown. The arrangement of sources position and size within a layout is automatically done by the software.

To launch an auto-layout, single-press the according **layout thumbnail view** – the source(s) content displays on the selected composition window.

Use the navigation buttons on the *Layouts view* to scroll up and down in the auto-layout thumbnail view list.

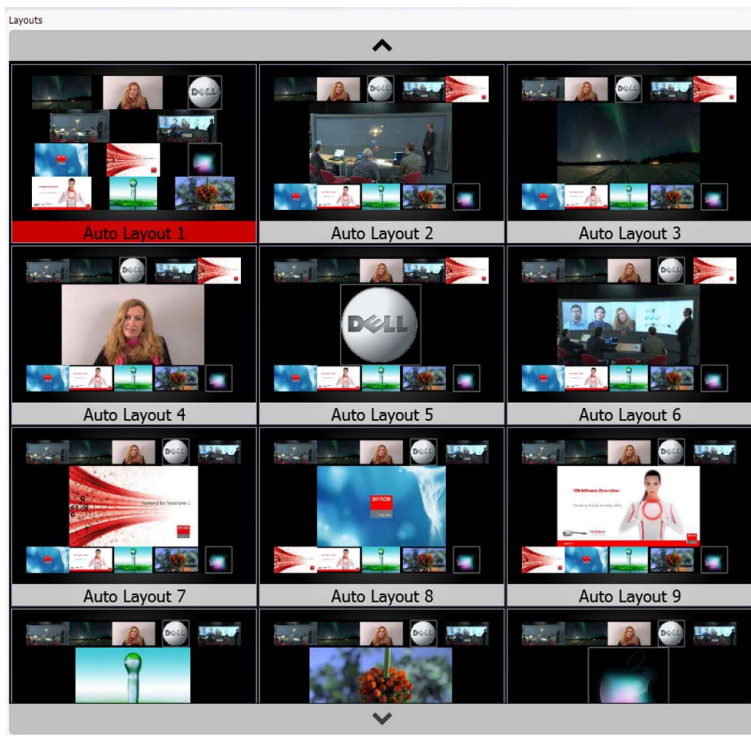


Image 3-5
Layouts view

4. USING NRC CLIENT GUI

4.1 Selecting a composition window

Introduction

A composition is a container for sources content, which allows you to arrange and display sources into their connected output window (i.e. composition window). The output window of each composition has its own position and size relative to the screen.

How to select a composition window?

1. In the NRC Client GUI, navigate to the toolbar.



Image 4-1
Toolbar: composition selection

2. Select the desired composition window on the screen, by single-pressing the relevant **Composition button** on the toolbar.



Image 4-2

The selected composition is indicated by a red-color boundary on the NRC Client GUI. Simultaneously, the according composition window becomes active on the screen.

4.2 Launching a source

Introduction

The *Sources view* shows all configured sources and the connected ClickShare sources. Each of these sources can be shown in one or more composition windows (via the selected auto-layout in NRC Client GUI) on the screen. Depending on the number of source(s) selected, the system automatically arranges the source position and size within the auto-layout.

To display the configured source content on the composition window, press the corresponding source thumbnail view in the *Sources view*.

To display the ClickShare source content on the composition window, the user need to single-press the **ClickShare button**.

The sources can contain audio. To broadcast the audio of the source(s), external speakers must be attached to the compositor (server) PC.

How to launch a configured source via NRC Client GUI?

1. In the NRC Client GUI, navigate to the *Sources view*.
2. Display the selected source content on the composition window by doing either of the followings:

4. Using NRC Client GUI

- **Short-press** the source **thumbnail view** to display the source content together with the other source contents (if currently displaying any) on the composition window.
- **Long-press** the source **thumbnail view** to display the source content on full composition window replacing the other source contents (if currently displaying any).

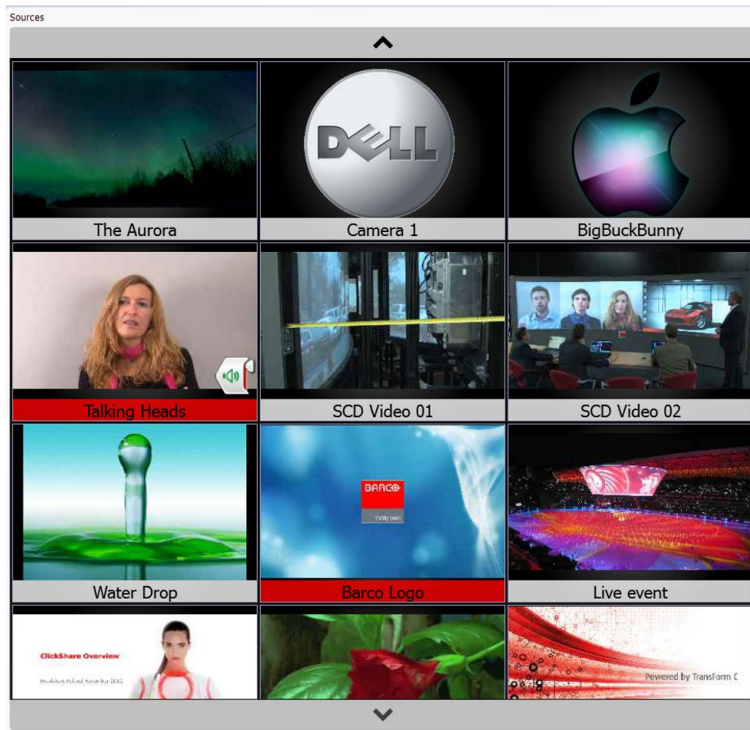


Image 4-3
Sources view: Selecting the source(s)

Note: The displayed source name is highlighted by red-color label in its thumbnail view. If the source audio is configured, an audio control button appears on the source thumbnail view for audio volume control and muting of the source audio.

The selected source content is added and displayed within the auto-layout(s) and on the composition window.

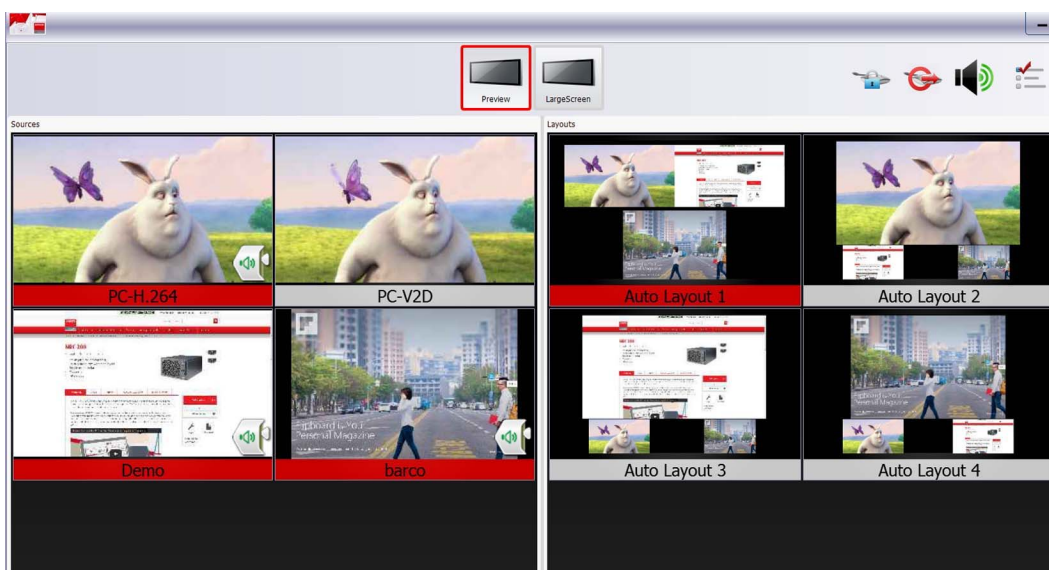


Image 4-4
Source content within an auto-layout

How to launch a ClickShare source?

There are two ways to launch a ClickShare source, depending on the moderation status:

- Moderation disabled
- Moderation enabled

Moderation disabled

1. Insert the **ClickShare button** into a USB port of your source machine (e.g. laptop, mobile, tablet, etc...).
2. Press the **ClickShare button**:
 - **Short-press** the **ClickShare button** to display the ClickShare source content together with the other source contents (if currently displaying any) on the composition window.
 - **Long-press** the **ClickShare button** to display the ClickShare source content on full composition window replacing the other source contents (if currently displaying any).

The ClickShare source becomes available in the layout view.

The displayed ClickShare source now becomes available to other remote users and can be redistributed to other composition windows via the NRC Client GUI.

It remains available until it is removed by its owner by pressing the **ClickShare button** again or unplugging the **ClickShare button** (source content disappears approximately after 1 minute).

A ClickShare source can also be disconnected by disabling/hiding the ClickShare source on all composition windows.



The displayed ClickShare source name is highlighted by red-color label in its thumbnail view. If the source audio is enabled, an audio control button appears on the source thumbnail view for audio volume control and muting of the ClickShare source audio.



Optional: The other remote users can follow the “Launching a configured source via NRC Client GUI” procedure to launch the displayed ClickShare source.

Moderation enabled

1. Insert the **ClickShare button** into a USB port of your source machine (e.g. laptop, mobile, tablet, etc...).
2. Make sure the **Lock/Unlock button** on the NRC Client GUI toolbar is in the "unlocked" state, otherwise no ClickShare button will be able to connect.
3. Press the **ClickShare button**.
The ClickShare source becomes available in the *Sources view*.
4. Select the ClickShare source in the *Sources view*.
The ClickShare source becomes available in the composition window
Tip: *The ClickShare source remains available until the **Disconnect button** on the NRC Client GUI toolbar is pressed, or until the ClickShare dongle is removed by its owner by pressing the **ClickShare button** again or unplugging the **ClickShare button** (this last part is the same as when moderation is disabled).*

4.3 Hiding a displayed source

How to hide displayed source via NRC Client GUI?

1. In the NRC Client GUI, navigate to the *Sources view*.
2. Press the **thumbnail view** of the displayed source whose content you want to remove from the composition window.

How to hide ClickShare source?

Remove the ClickShare source content from the composition window by doing either of the followings:

- Press the **ClickShare button** again;
- Unplug the **ClickShare button** from source machine;
- Press the **thumbnail view** of the ClickShare source on the NRC Client GUI



The inactive source name is highlighted in grey-color label in its thumbnail view.

4.4 Activating a layout

Introduction

A layout is an arrangement of source(s) on a composition window. Multiple auto-layouts can be used for different views of source(s) on a composition window.

The auto-layout is only available if at least one source is selected in the *Sources view*.

How to activate a layout?

1. In the NRC Client GUI, navigate to the *Layouts view*.
2. Single-press the desired layout thumbnail view.



Image 4-5
Layouts view: Selecting an auto-layout

Note: By default, the first auto generated layout (i.e. Auto Layout 1) is always activated on the selection of a source.

Note: The active auto-layout is highlighted by red-color label in its thumbnail view.

The selected auto-layout is loaded on the selected composition window replacing a possibly former layout.

4.5 Controlling the source audio

Introduction

Using this feature the audio of configured sources and ClickShare sources can be controlled.

How to control the audio of a source?

1. In the *Sources view*, navigate to the thumbnail view of the launched source whose audio streaming you want to control.


2. Single-press the audio control button  on the thumbnail view



Image 4-6
Audio button on a source thumbnail view

An audio control widget opens. If not used for few seconds, the audio control widget disappears automatically.

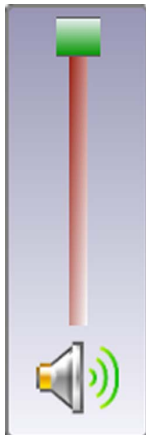


Image 4-7
Audio control widget

3. Control the launched source audio by doing followings;

4. Using NRC Client GUI

- move the green slider bar up to increase the volume;

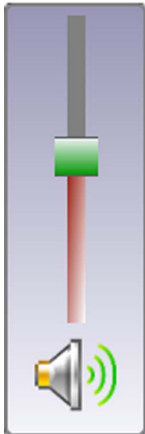


Image 4-8
Increasing the volume

- move the green slider bar down to decrease the volume;

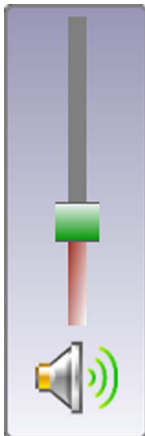


Image 4-9
Decreasing the volume


- single-press the loudspeaker logo  in the audio control widget to mute the source audio;



Image 4-10
Source audio muted


- single-press the crossed out loudspeaker logo  in the audio control widget to unmute the source audio.



Image 4-11
Source audio unmuted

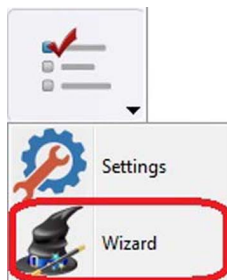
5. CONFIGURING NRC CLIENT GUI SETTINGS

5.1 The Configuration Wizard

5.1.1 Start the Configuration Wizard

How to start the Configuration Wizard

1. On the NRC Client GUI toolbar, press the **Configure** button and select **Wizard**:



The *Welcome* page opens.

5.1.2 Room compositor configuration

How to configure the NRC Client GUI ?

1. Press **Start Configuration**.
The *General Settings* page opens.

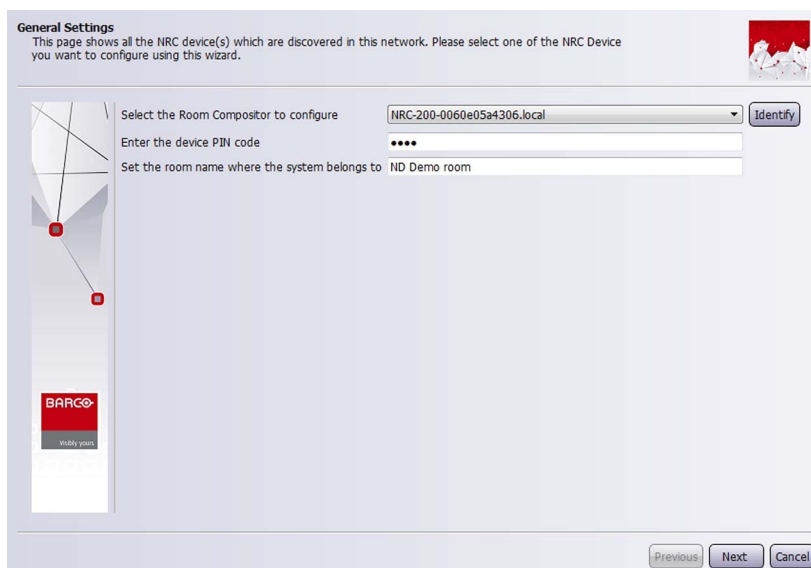


Image 5-1
General settings page

2. Press **Identify** and select the Room Compositor to configure.
Identify is used to check if you have selected the correct NRC. A text message will appear on the video outputs of the selected NRC.
Enter the **PIN code**.

5. Configuring NRC Client GUI settings

The default PIN code is "1234".

It can be changed in the Administrator Settings (see image 5-31).

Set the **room name**.

This is used in the ClickShare environment.

Press **Next**.

The *Output Settings* page opens.

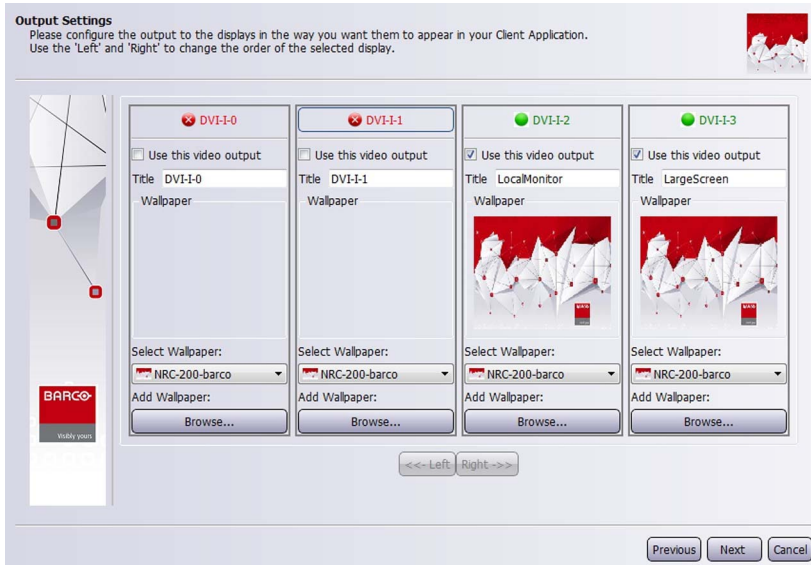


Image 5-2
Output settings page

3. Select the video outputs you need from the connected outputs (marked green).
Use the **Left** and **Right** buttons to change the order of the selected display.
Press **Next**.
The *Source Settings* page opens.

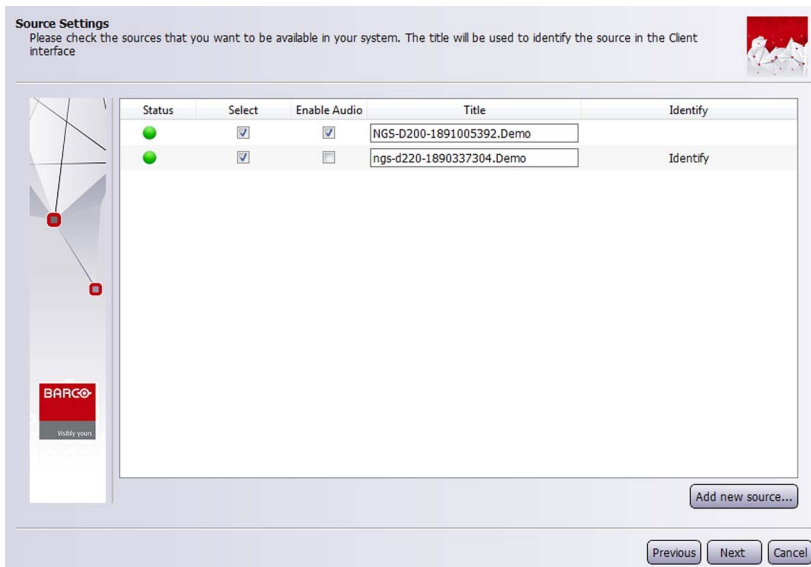


Image 5-3
Source settings page

Any NGS-D200 or NGS-D220 will automatically be detected if available in the same LAN:

- Available sources are marked **green** (red marked sources are not available).
- **Select** the sources you want to be added into the *Sources view*.
- **Enable Audio** for the sources you want to hear.
- **Title**: enter the source name you want to see in the *Sources view*.

4. If you want to select other camera types (IP cameras or other IP video streams), press **Add new source...**, the following pop—up opens:

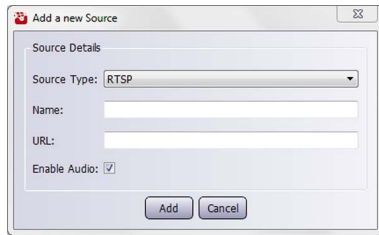


Image 5-4
Add new source

- **Source type:** select RTSP.
- **Name:** Enter a name for the new source, you will see this name later in the *Sources view*.
- **URL:** Fill in the URL of the webstream.
- **Enable Audio:** Select or deselect.

Press **Add**.

After adding the new sources will become available in the Sources and can be selected in the *Source Settings* page.

Press **Next**.

The *ClickShare Settings* page opens.



Image 5-5
ClickShare settings page

5. Select **Enable ClickShare Integration** if you would like to add ClickShare sources.
Select **Enable Moderation** if you would like to preview sources locally before showing them.
Press **Next**.
The *Finish Configuration* page opens.

5. Configuring NRC Client GUI settings

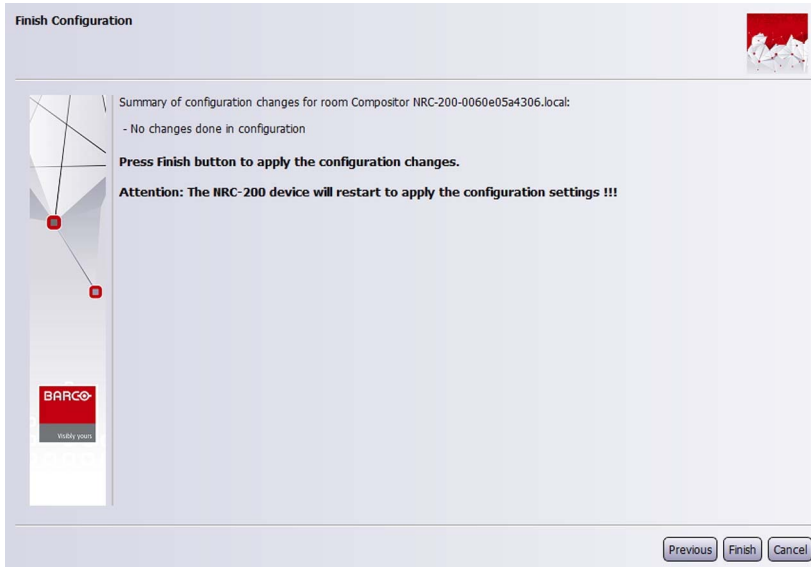


Image 5-6
Finish configuration

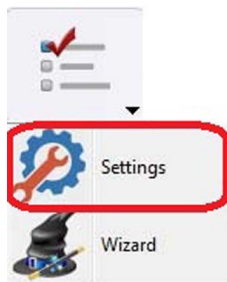
6. Review your modifications and if OK, press **Finish**
The configuration is completed.
The NRC will restart automatically.

5.2 The Settings dialog

5.2.1 Start the Settings dialog

How to start the Settings dialog

1. On the NRC Client GUI toolbar, press the **Configure** button and select **Settings**



The *Settings Authentication* page opens:

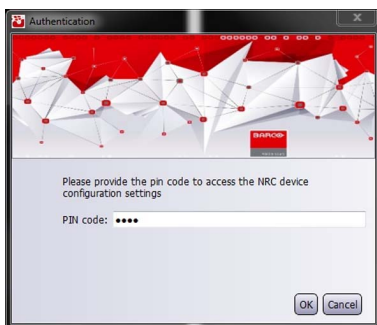


Image 5-7
Settings Authentication page

Enter the **PIN code** and press **OK**.

The default PIN code is “1234”.

The *Configuration* dialog opens.

5.2.2 Touch Panel Settings

Introduction

The *Touch Panel Settings* page allows you to connect to the other compositor (i.e. NRC Server) PC's connected to the same NRC private LAN, manipulates thumbnail view size of sources and layouts and enables/disables the screen saver setting of Client PC.

Press **Touch Panel** on the left pane in the *Configure* dialog to open the Touch Panel Settings page

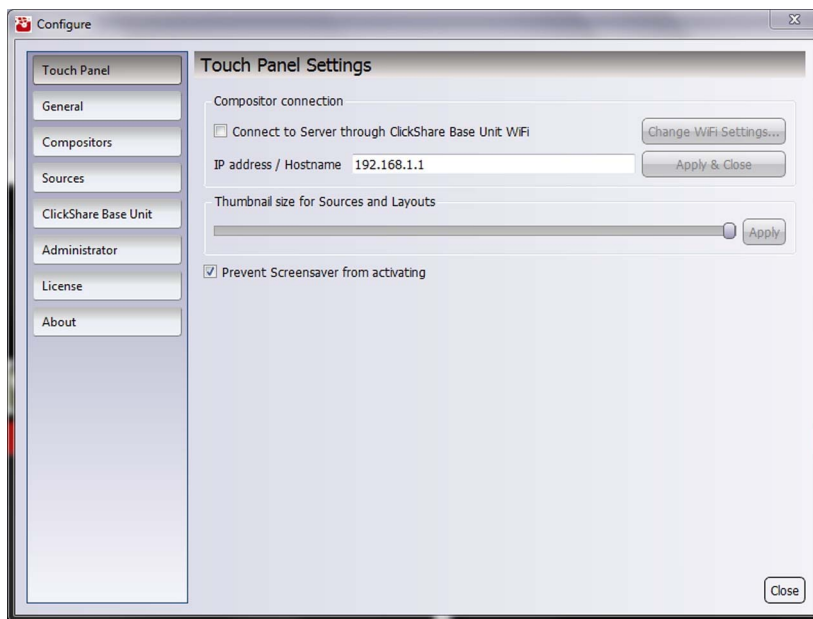


Image 5-8
Touch Panel Settings page

Connecting to the compositor PC through ClickShare Base Unit WiFi

1. Tick *Connect to Server through ClickShare Base Unit WiFi* checkbox. See label 1.



Image 5-9
Connecting to compositor PC through WiFi

Automatically, the IP address changed to 192.168.1.1 in the IP address/Hostname text box and also greyed out (i.e. cannot be edited further).

By default, through this option the client will always connect to the IP address 198.168.1.1.

2. Press **Apply & Close**. See label 2.

5. Configuring NRC Client GUI settings

3. Enter the ClickShare Base Unit SSID and password and press **Connect**. See labels 3, 4 and 5 respectively.

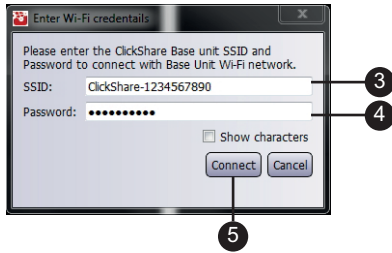


Image 5-10
Entering the WiFi credentials

Tick *Show characters* checkbox to display the characters entered for password.



Following warning message appears on the bottom-right window of the NRC Client GUI, if NRC Client PC unable to connect to the composer PC via ClickShare Base Unit WiFi. In such case, press **Change WiFi Settings...** (which become enabled due to this) on the **Touch Panel Settings** page and configure the ClickShare Base Unit WiFi settings – see page 31.

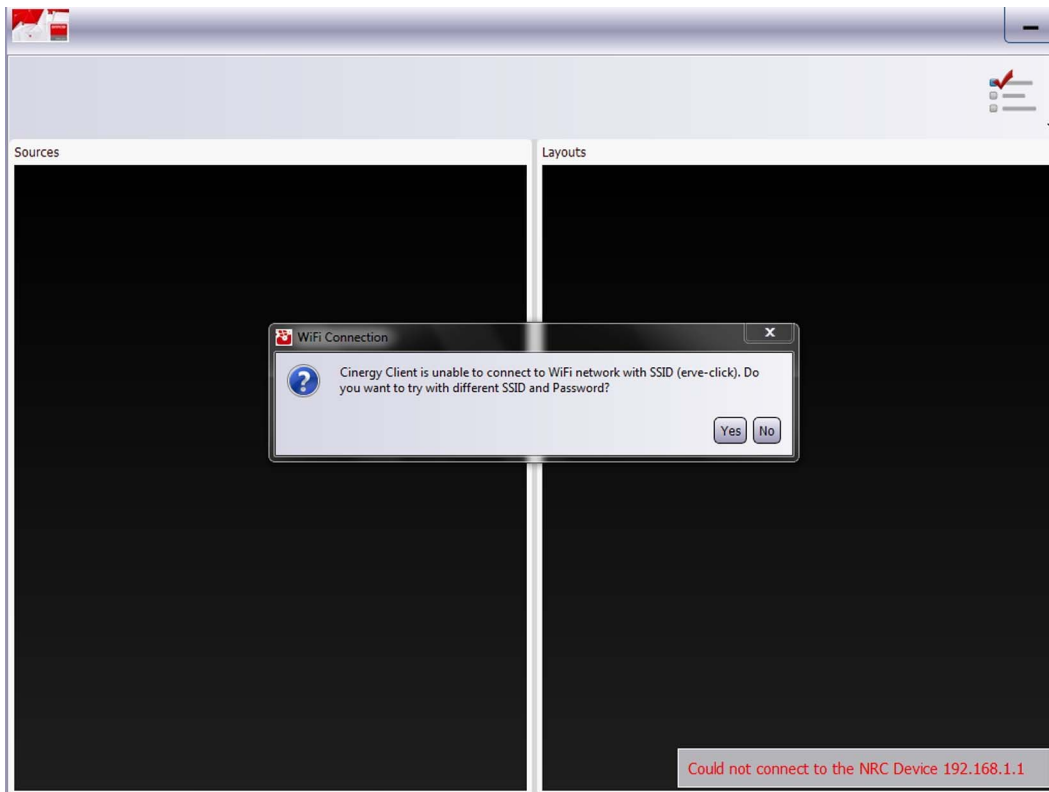


Image 5-11
Warning: Unable to connect via WiFi

Connecting to other compositor PC

1. In the *Touch Panel Settings* page, navigate to the section *Compositor connection*.
2. Enter the IP address or Hostname of the compositor PC you want to connect. See *label 1*.



Image 5-12
Connecting to a compositor PC

3. Press **Apply & Close**. See *label 2*.

Manipulating the thumbnail size of sources and layout

1. In the *Touch Panel Settings* page, navigate to the section *Thumbnail size for Sources and Layouts*.
2. Hold and move the slide bar to adjust the thumbnail view size.
 - move left to decrease the size;
 - move right to increase the size.

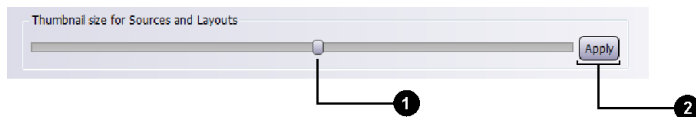


Image 5-13
Manipulating thumbnail view size

3. Press **Apply**.
The thumbnail view size of the sources and layouts adjust equally and simultaneously.

5.2.3 General Settings

What can be done?

The *General Settings* page allows you to change the meeting room name and location.

Press **General** on the left pane in the *Configure* dialog to open the *General Settings* page.

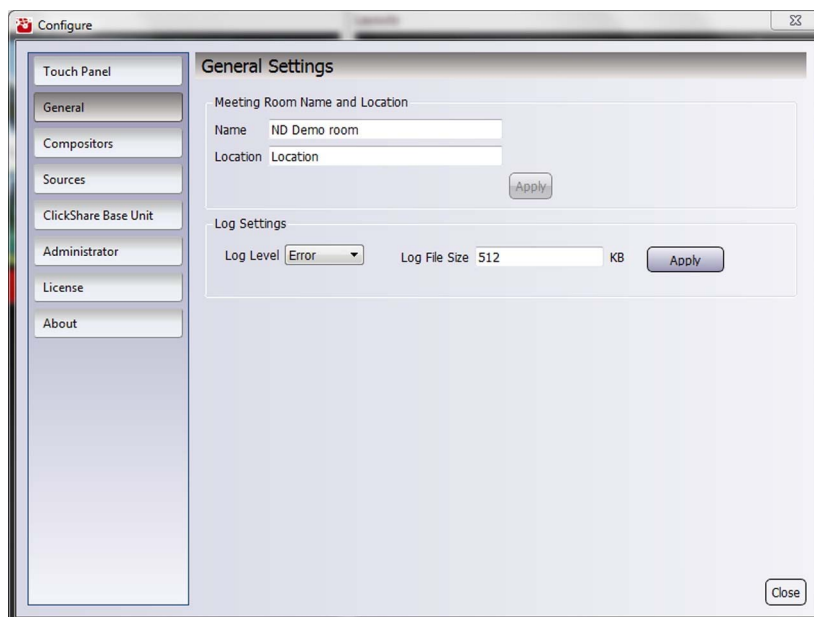


Image 5-14
General Settings page

Changing the meeting room name and location



Image 5-15
Changing the meeting room and location

1. Enter the new meeting room name. See *label 1*.
2. Enter the location of the new meeting room. See *label 2*.
3. Press **Apply** to confirm the changes. See *label 3*.

Changing the log settings

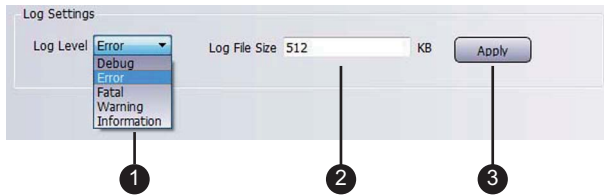


Image 5-16
Changing the log settings

1. Select the preferred log level form the drop down box. See *label 1*.
2. Enter the available log file size. See *label 2*.
3. Press **Apply** to confirm the changes. See *label 3*.

5.2.4 Compositors Settings

Introduction

The *Compositors Settings* page allows you to change the compositor icons order, upload a predefined or personalized icon for the compositor, upload a predefined or personalized wallpaper for the compositor window, show/hides the button to minimize and maximize the compositor window and adjust the compositor PC screen saver settings.

Press **Compositors** on the left pane in the *Configure* dialog to open the *Compositors Settings* page.

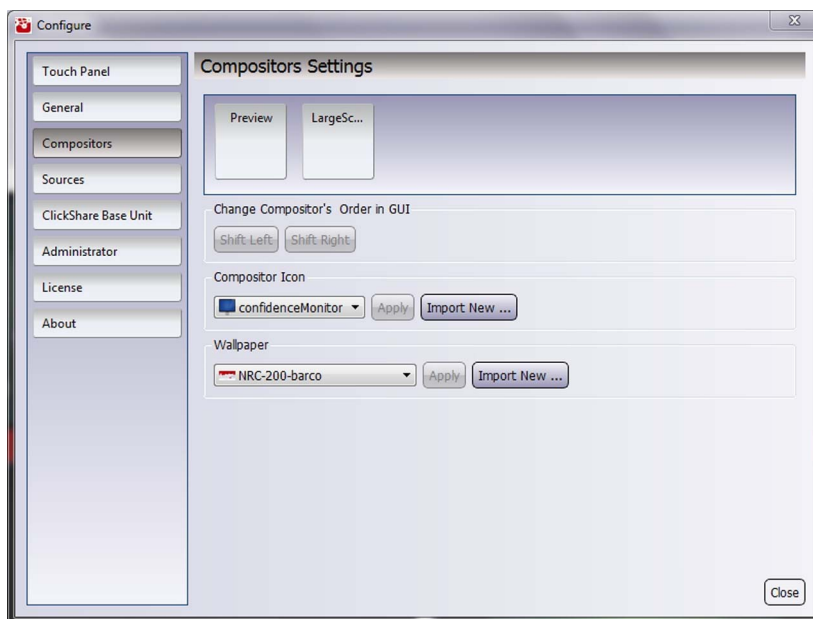


Image 5-17
Compositors Settings page

Changing the compositor order

1. In the *Compositor Settings* page, select a compositor whose order you want to change.

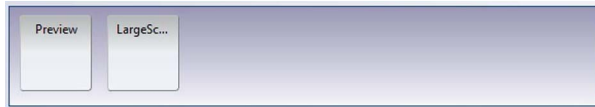


Image 5-18
Selecting a compositor

The selected compositor icon background color turns blue and appears to be virtually pressed.

2. Change the compositor order on GUI by doing following:

- press **Shift Left** to move the selected compositor by one place in left direction;
- press **Shift Right** to move the selected compositor by one place in right direction.

Uploading a predefined icon for the compositor

1. In the *Compositor Settings* page, select a compositor whose icon you want to change.

The selected compositor icon background color turns blue and appears to be virtually pressed.

2. Navigate to the *Compositor Icon* section and select one of the available predefined icons from the drop-down list. *See label 1.*

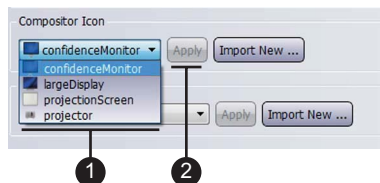


Image 5-19
Uploading an icon

3. Press **Apply**. *See label 2.*

Uploading a personalized icon for the compositor

1. In the *Compositor Settings* page, select a compositor whose icon you want to change.

The selected compositor icon background color turns blue and appears to be virtually pressed.

2. Navigate to the *Compositor Icon* section and press **Import New....** *See label 1.*

5. Configuring NRC Client GUI settings

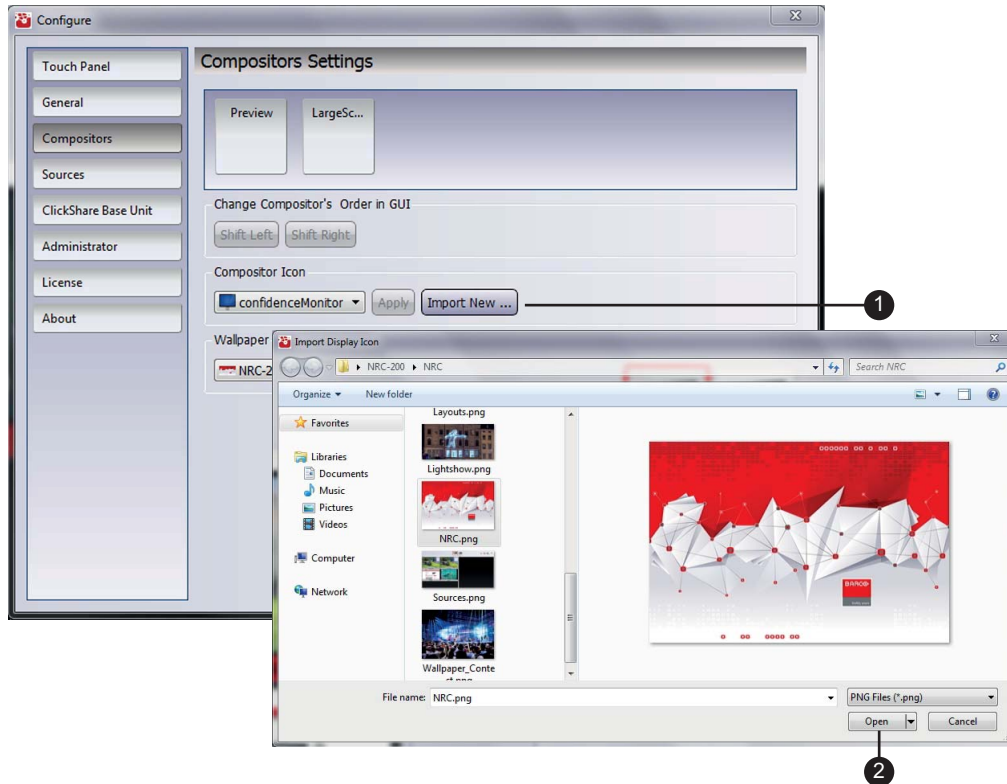


Image 5-20
Uploading a personalized icon

3. Select the desired file and press **Open**. See label 2.
The uploaded file is appended as new icon in the compositor icon drop-down list.
Note: The upload file should be a PNG format.
4. Now follow the uploading a predefined icon procedure to activate the personalized icon.

Uploading a predefined wallpaper for the compositor

1. In the *Compositor Settings* page, select a compositor whose icon you want to change.
The selected compositor icon background color turns blue and appears to be virtually pressed.
2. Navigate to the *Wallpaper* section and select one of the available predefined wallpapers from the drop-down list. See label 1.

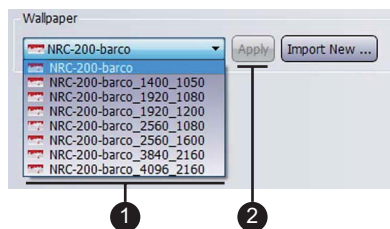


Image 5-21
Uploading a wallpaper

3. Press **Apply**.
Note: The selected wallpaper automatically resized to fit the aspect ratio of the compositor window on NRC Server software startup.

Uploading a personalized wallpaper for the compositor

1. In the *Compositor Settings* page, select a compositor whose icon you want to change.
The selected compositor icon background color turns blue and appears to be virtually pressed.
2. Navigate to the *Wallpaper* section and press **Import New...** See label 1.

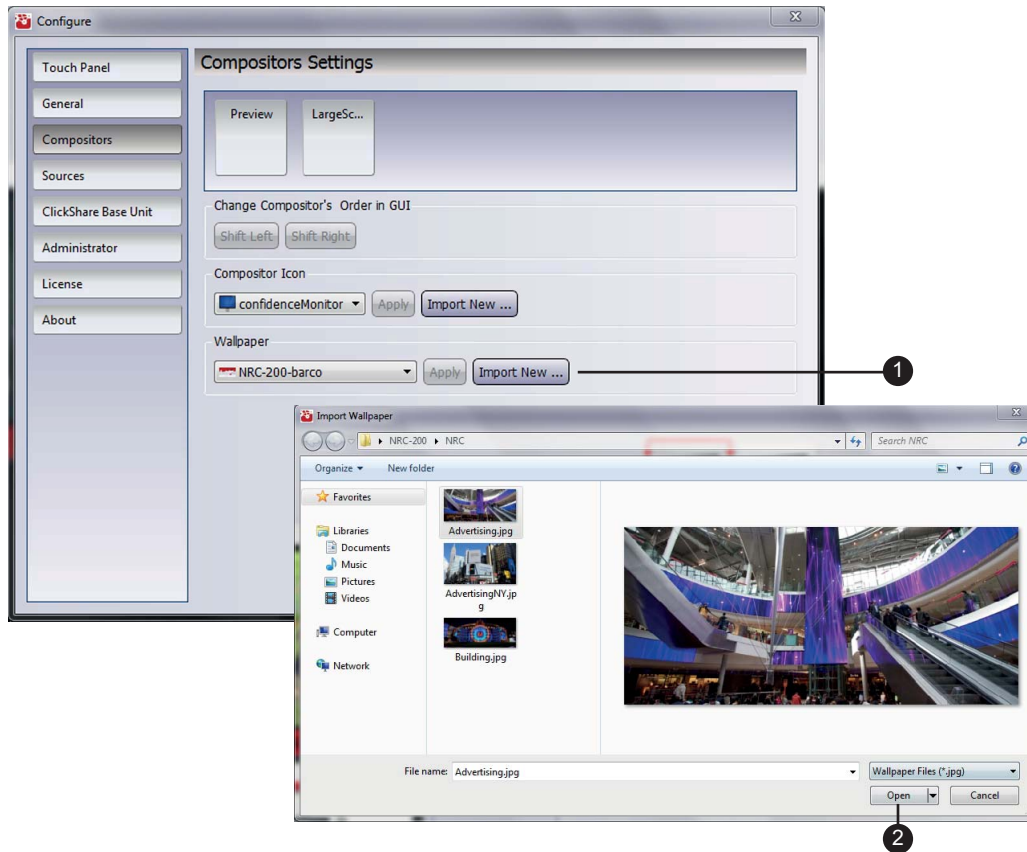


Image 5-22
Uploading a personalized wallpaper

3. Select the desired file and press **Open**. See label 2.

The uploaded file is appended as a new wallpaper in the wallpaper drop-down list.

Note: The upload file should be a JPEG format and must have the same native resolution of the corresponding compositor.

Note: The selected wallpaper automatically resized to fit the aspect ratio of the compositor window on NRC Server software startup.

4. Now follow the uploading a predefined wallpaper procedure to activate the personalized wallpaper.

5.2.5 Sources Settings

Introductions

The *Sources Settings* page allows you to enable/disable rendering the source content on the thumbnail view, upload a predefined or personalized icon for the source.

Press **Sources** on the left pane in the *Configure* dialog to open the *Sources Settings* page.

5. Configuring NRC Client GUI settings

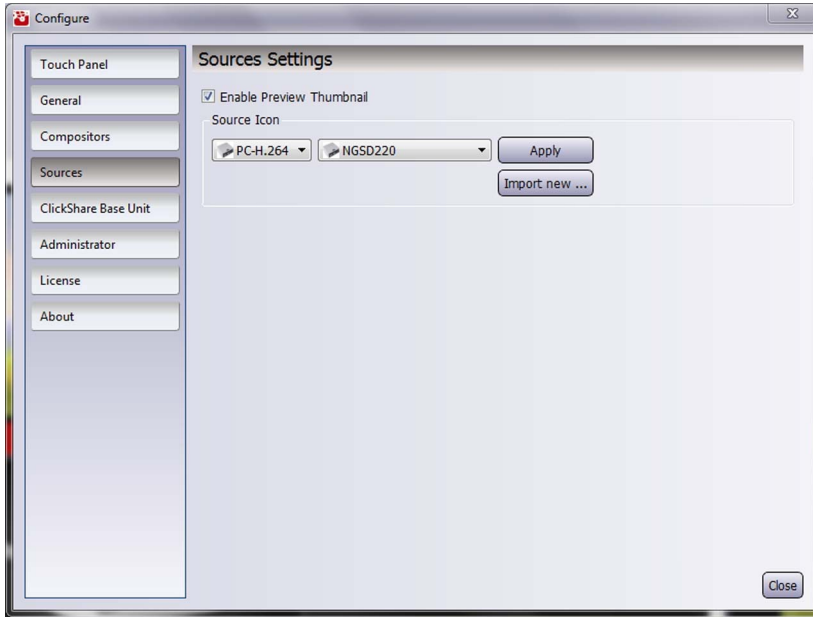


Image 5-23
Sources Settings page

Enable Preview Thumbnail : If ticked, the thumbnail view in the source view shows the content of the added source, else the icon selected for the respective source (i.e. static image) is displayed.

Uploading a predefined icon

1. In *Source Settings* page, select a source from the drop-down list whose icon you want to change. See *label 1*.

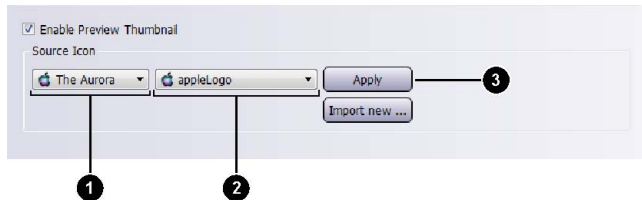


Image 5-24
Uploading an icon

2. Select one of the available icons from the drop-down list. See *label 2*.
3. Press **Apply**. See *label 3*.

Uploading a personalized icon

1. In *Source Settings* page, select a source from the drop-down list whose icon you want to change. See *label 1*.

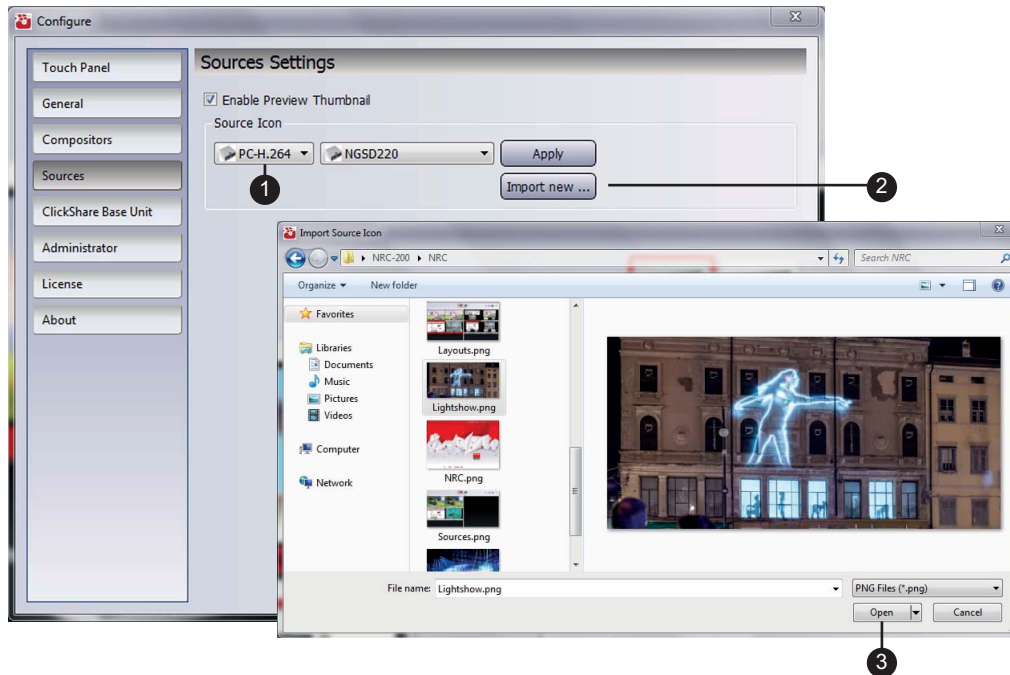


Image 5-25
Uploading a personalized icon

2. Press **Import New...** See label 2.
3. Select a desired file and press **Open**. See label 3.
Note: The upload file should be a PNG format.
4. Now follow the uploading a predefined icon procedure to activate the personalized icon.

5.2.6 ClickShare Base Unit Settings

Introduction

The *ClickShare Base Unit Settings* page allows you to configure your ClickShare Base Unit connected to the compositor PC.

Press **ClickShare Base Unit** on the left pane in the *Configure* dialog to open the *ClickShare Base Unit Settings* page.

5. Configuring NRC Client GUI settings

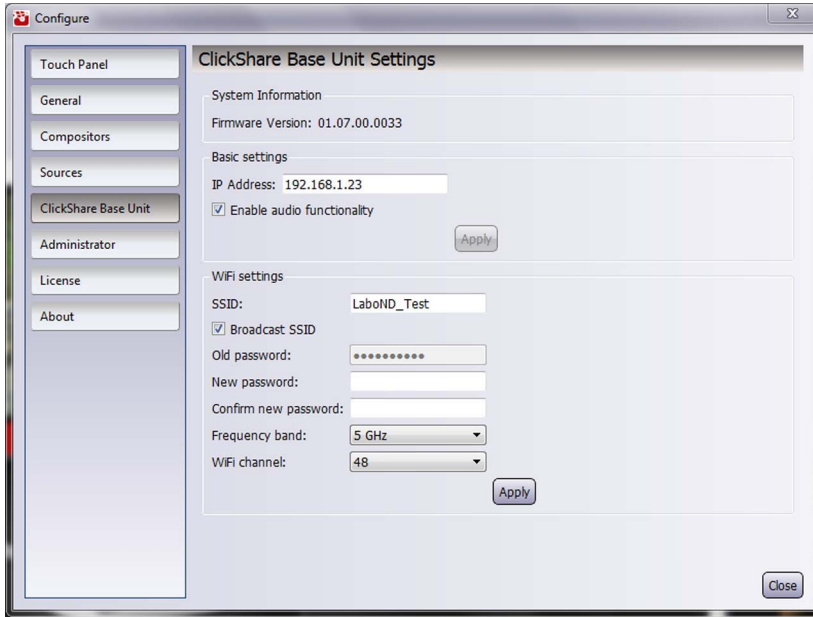


Image 5-26
ClickShare Base Unit Settings page

Viewing the ClickShare Base Unit firmware version number

Navigate to the section System Information and view the firmware version number.

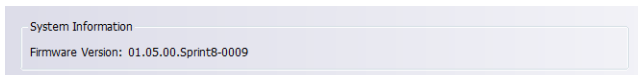


Image 5-27
Viewing the firmware version number

Configuring the Basic settings



Make sure not to change the default IP Address and Administrator password in the section Basic settings.

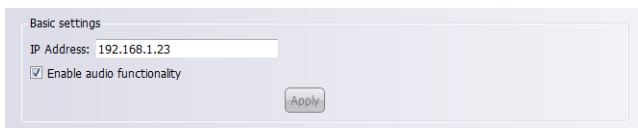


Image 5-28
Configuring the basic settings

Enable audio functionality: enables/disables (ticked/unticked) the captured audio on the Base Unit.

Press **Apply** to confirm the changes.

Configuring the Wifi settings

1. In the *ClickShare Base Unit Settings* page, navigate to the section *WiFi settings*.

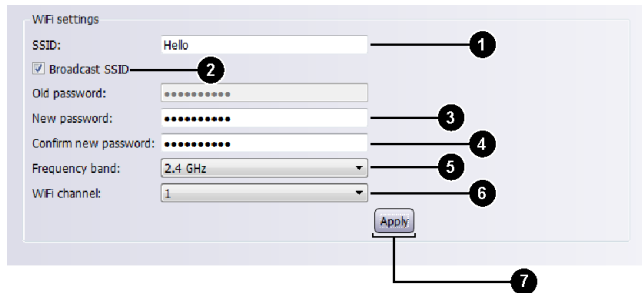


Image 5-29
Configuring the WiFi settings

2. Enter a public name (SSID) for the wireless network. See label 1.
Note: The default SSID is ClickShare <serial base number>
Tip: Pair the ClickShare buttons again to save any change to the SSID.
3. If you want to broadcast this SSID, tick the *Broadcast SSID* checkbox. See label 2.
Tip: Pair the ClickShare buttons again to save any change to the SSID.
4. Enter a new password and confirm that password. See labels 3 and 4.
Tip: Pair the ClickShare buttons again to save any change to the password.
5. Select the wireless connection frequency band: 2.4 GHz or 5 GHz from the *Frequency band* drop-down list. See label 5.
Note: Make sure your PC's wireless interface supports the 5 GHz band before selecting it on the Base Unit.
6. Select the desired wireless connection channel from the *WiFi channel* drop-down list. See label 6.
Note: The channels available in the list vary according to the regional version of your Base Unit. You do not need to pair the ClickShare buttons again when changing the frequency band or wireless connection channel.
7. Press **Apply** to confirm the changes. See label 7.

5.2.7 Administrator Settings

Introduction

This *Administrator Settings* page allows you to define the login (i.e. Administrator) mode for the user to access the NRC Client settings page. Furthermore, it allows you to change the PIN code.

Press **Administrator** on the left pane in the *Configure* dialog to open the *Administrator Settings* page.

5. Configuring NRC Client GUI settings

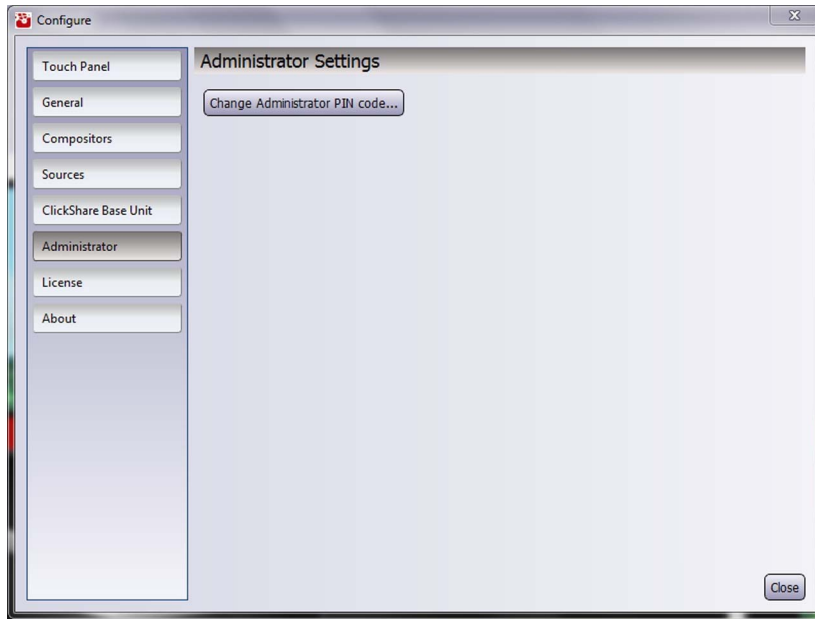


Image 5-30
Administrator Settings page

Changing the PIN code

1. Press **Change Administrator PIN code....** See label 1.
If set, only the authorized user's who knows the secret PIN Code can access the NRC Client GUI settings page.

The *Change PIN code* dialog opens.

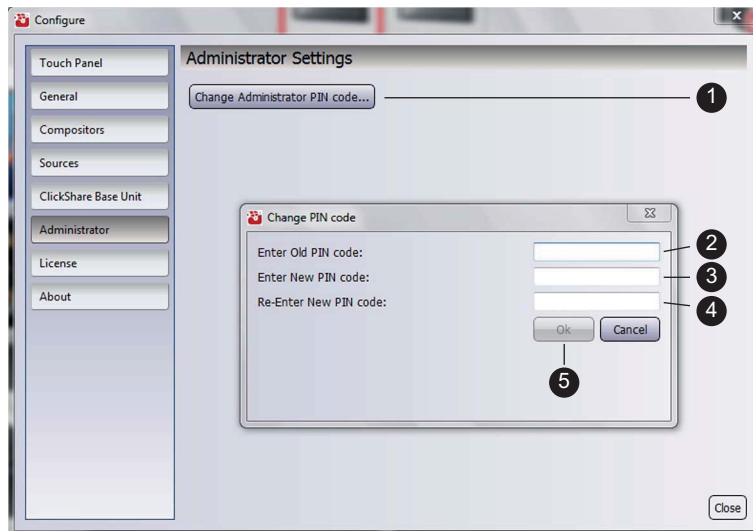


Image 5-31
Changing the PIN code

2. Change the PIN code by doing followings:
 - a) **Enter Old PIN** : enter the old PIN code. See label 2;
 - b) **Enter New PIN** : enter the new PIN code. See label 3;
 - c) **Re-Enter New PIN** : re-enter the new PIN code. See label 4;
 - d) press **OK** to change the PIN code and close the dialog. See label 5.

5.2.8 License Settings

Introduction

From the *License Settings* page, you can import a license file required after the NRC Server software installation or after the license file has been expired.

Press **License** on the left pane in the *Configure* dialog to open the *License Settings* page.

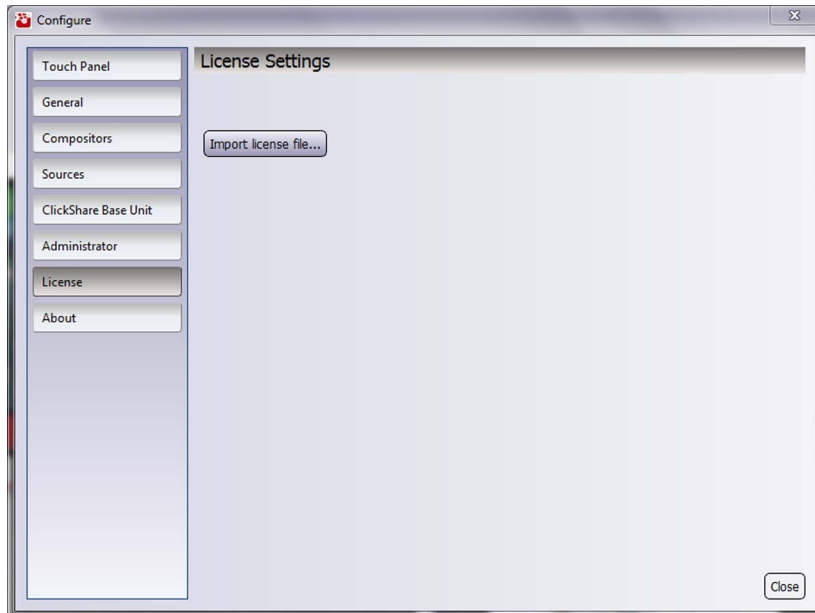


Image 5-32
License Settings page

How to import the license file?

1. Insert the USB stick in the USB slot on the compositor PC where NRC Server software is running.
2. Login to your touchscreen PC or tablet PC.
3. From the NRC Client GUI, press the setting button.
4. Open the *Configure* dialog by entering the secret PIN code or yours window credentials.
5. Press **Import license file...** in the *License Settings* page. See label 1.

5. Configuring NRC Client GUI settings

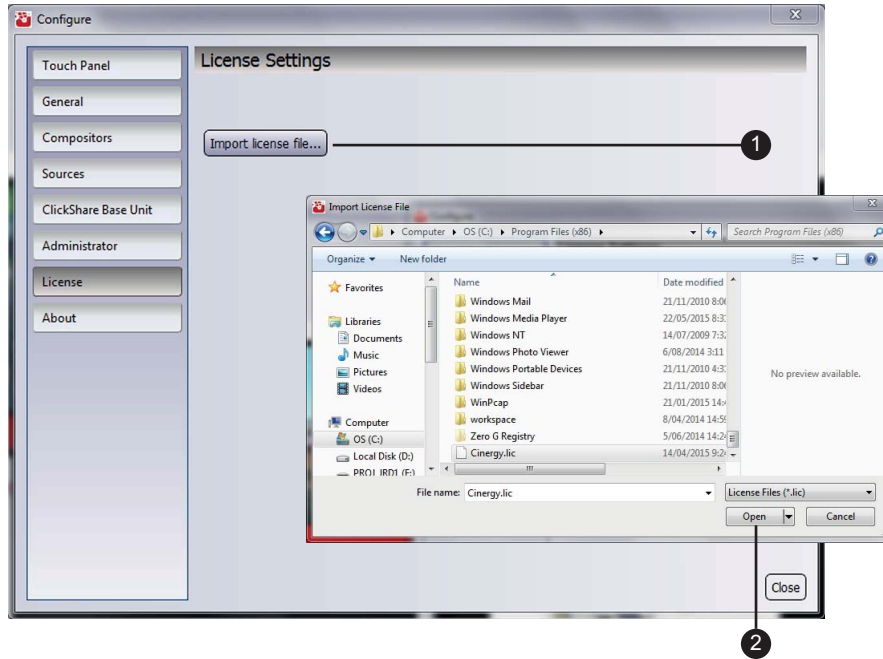


Image 5-33
Importing a license file

6. Select the license file on the USB stick and press **Open**. See label 2.
7. Press **OK** and restart the NRC Server software.

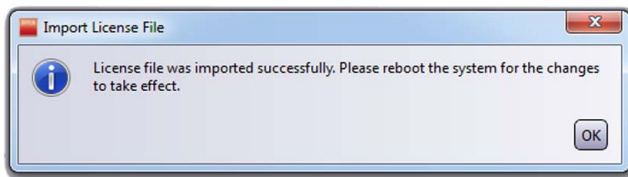


Image 5-34
License file is imported

5.2.9 About

Introduction

The *About* page displays some general information about the display system, software versions, module version and build date.

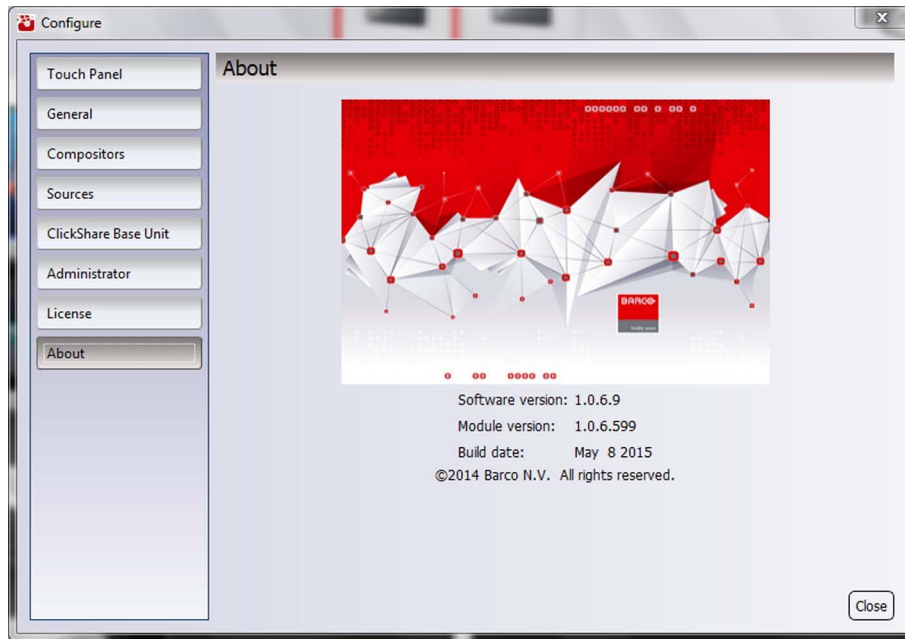


Image 5-35
About

6. WEB INTERFACE FOR THE NRC

6.1 Pre-configured network settings

Default network settings

After the installation of the NRC software, the unit is pre-configured with a default IP address and DHCP with zero configuration fallback:

- Eth0: DHCP with zeroconf fallback
- Eth1: 192.168.1.1 255.255.255.0



WARNING: The IP addresses 192.168.1.x and 192.168.2.x are not allowed for the DHCP network. These are reserved for the ClickShare interface.

6.2 Starting the web interface



NRC web interface

The web interface provides access to the configuration and operating parameters of the NRC.

Home

To start the web interface:

1. On your PC, open a web browser.
The web interface runs in a standard web browser. It can be accessed from any PC within the video network.
2. Enter the hostname.local of the NRC into the address bar of the browser.
The default hostname has this format: NRC-200-<mac-address>.
The browser will display the web interface.
Example browser URL: NRC-200-0060e05e201c.local

Start up modes

When the web interface has started, its home page can be seen. On the left hand side there is a navigation-menu, which provides access to the different kind of settings. Each section can be accessed on an individual page.

The web interface can be used in two different modes:

- User mode
- Administrator mode

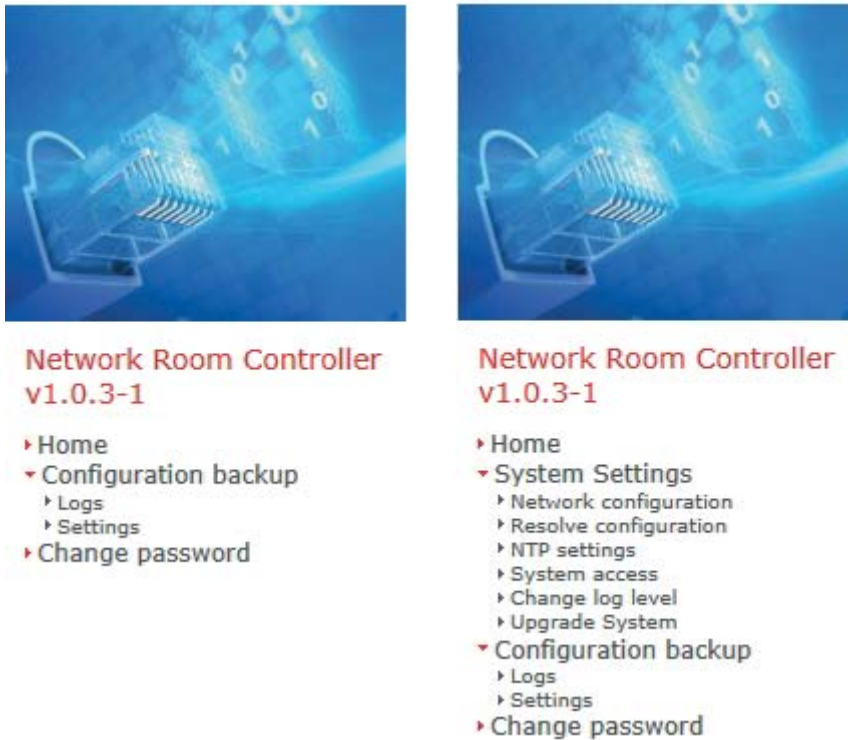


Image 6-1

Left: User mode, Right: Administrator mode

Depending on this mode, the menu as well as the possibility to configure settings on the respective pages differs. You can switch to another mode by logging in or out.

The authentication system of the NRC uses Pluggable Authentication Modules (PAM). As such, any authentication system that can be integrated in PAM can be used and configured.

Functionality is provided based on membership of two local groups:

- Level100: members of this group are allowed to modify both system settings and functional settings.
User account: Administrator mode.
- Level200: members of this group are allowed to modify functional settings only.
User account: User mode (= operator mode)

System settings are the settings of the machine itself, such as: NTP, network configuration, etc..

By default, the NRC provides two user accounts (Administrator and User).

New users can be added to the system (either locally or e.g. by integrating network based accounts). By adding these accounts to the groups level100 (system) or level200 (functional), they will be given the matching permissions.

6.3 How to log in

Standard mode

You can work in this mode **without** log in, you are not allowed to change any settings.



Changing the Functional settings is not possible in the standard mode. To change these settings login to user mode or administrator mode.

User log in

As a Barco user, you are allowed to change the host name only.

- Use the link [Log in](#) at the right top corner of the screen
- Your login and password needed here are:
Login: **barco**
Password: **b4rc0,BCD**

Administrator log in

As an administrator, you are allowed to change the underlying operating system.

- Use the link [Log in](#) at the right top corner of the screen
- Your login and password needed here are:
Login: **admin**
Password: **b4rc0,BCD**

6.4 Web interface — System settings

Log in

Log in as administrator (see previous paragraph) to view or change any of the system settings.

6.4.1 System settings — Network configuration



There are two tabs for Network configuration: *Interface eth0* and *Interface eth1*.

Network configuration for Interface eth0

1. Select *System settings — Network configuration* and the following page appears:

6. Web interface for the NRC

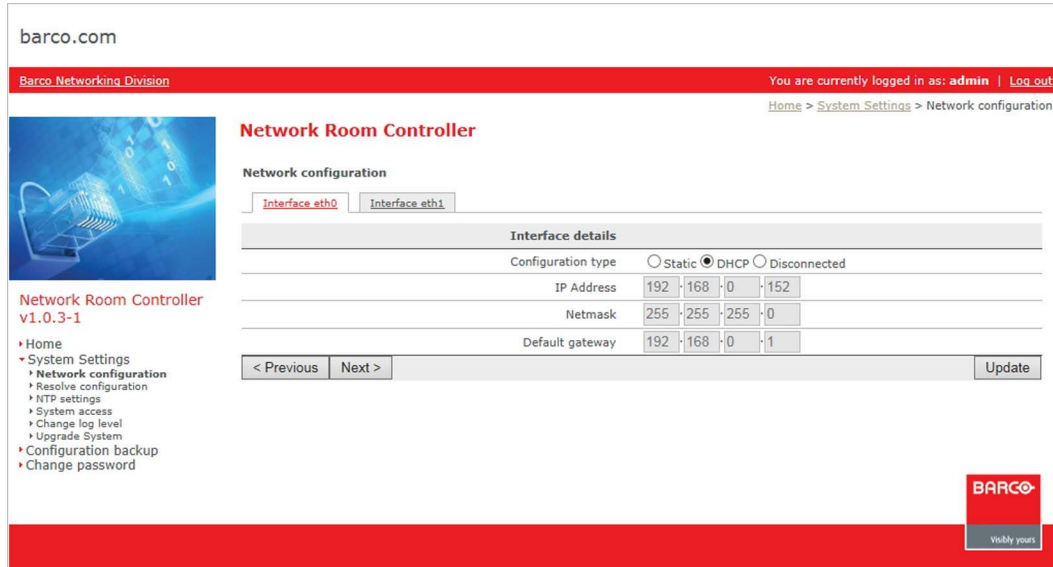


Image 6-2

Network configuration — Interface eth0 — using DHCP page

- **Configuration type**

Static: When *Static* is enabled, you can manually change the IP address as shown in the image above.

DHCP: When *DHCP* is enabled, an IP address will be automatically allocated to the unit.

Disconnected: When *Disconnected* is enabled, the network interface is disabled.

- **IP address, Netmask and Default gateway**

Fill in each of these lines when *Static* is enabled.

2. After the IP settings are changed, press **Update** on the right hand side.

Network configuration for Interface eth1

1. Select the tab *Interface eth1* and the following page appears:

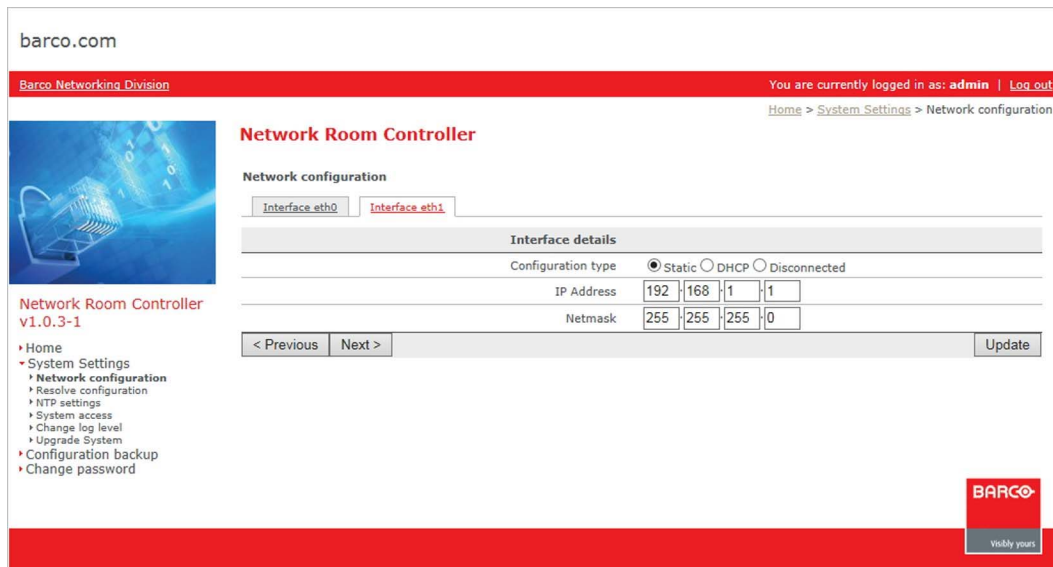


Image 6-3

Network configuration — Interface eth1— using Static page

This is similar to the settings on tab *Interface eth0*, see previous paragraph for eth0.



This *interface eth1* is for future use. Configuring this second interface requires detailed routing configuration and further expert system configuration.

6.4.2 System settings — Resolve configuration

Resolve configuration

1. Select *System settings — Resolve configuration* and the following page appears:

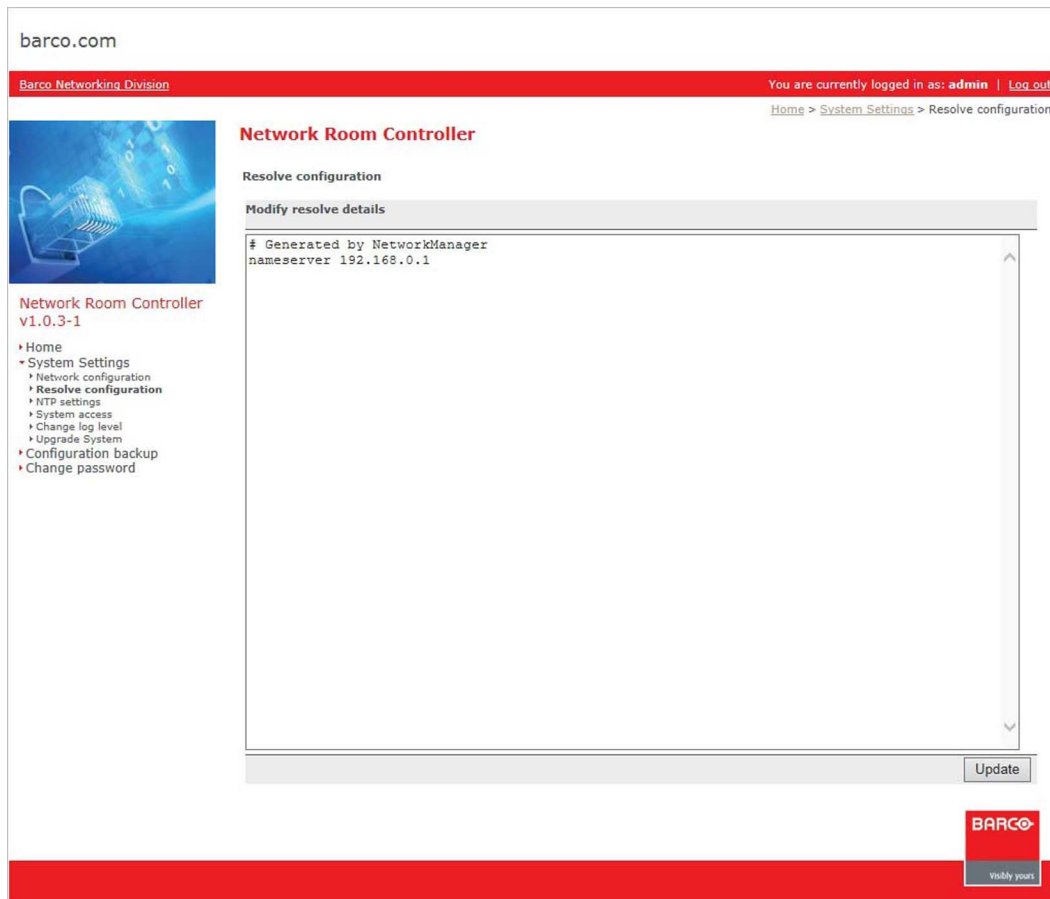


Image 6-4
Resolve configuration

On this page the DNS server can be adapted:

2. Write: “nameserver <IP-address DNS server>” on the page.
3. Press **Update** to change the configuration.



When DHCP is used, this can be updated via DHCP.

6.4.3 System settings — NTP settings

NTP settings

1. Select *System settings — NTP settings* and the following page appears:

6. Web interface for the NRC

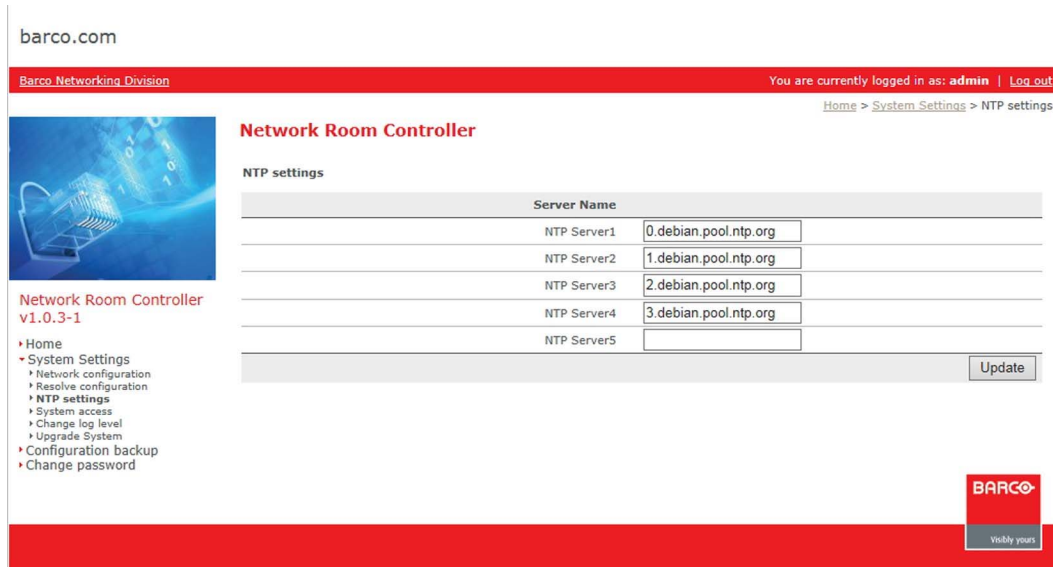


Image 6-5
Use NRC as NTP client

2. Fill in the NTP server list

Example: NTP Server1: 10.0.0.24, NTP Server2: 150.158.252.51.

You can also use the name of the NTP server(s) when a **nameserver** is configured in *System settings* — *Resolve configuration*.

3. Press **Update** to save the new server list.

6.4.4 System settings — System access

System access

1. Select *System settings* — *System access* and the following page appears:

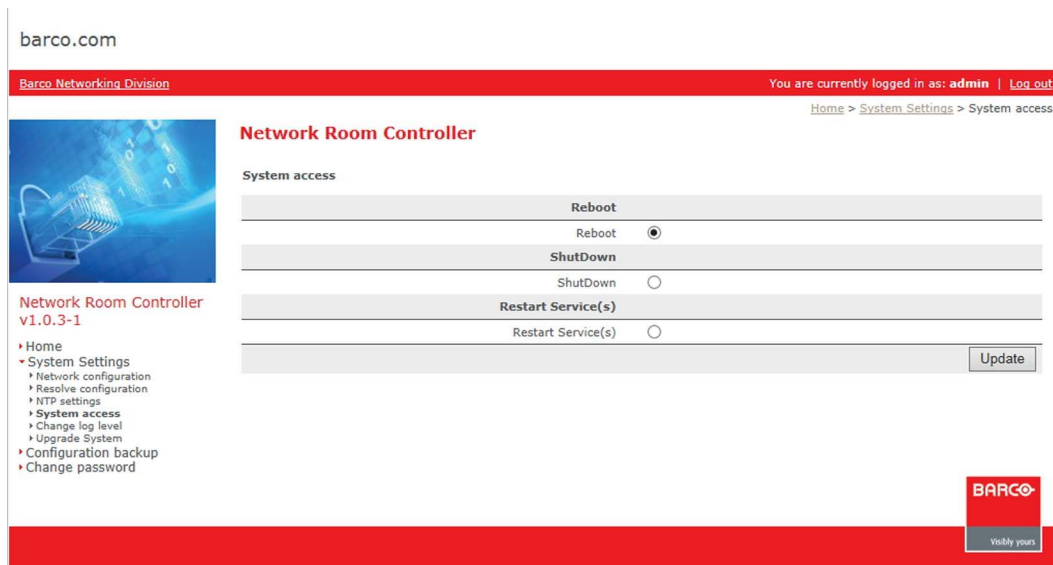


Image 6-6
System access page

2. Enable reboot, shutdown or restart services of the device:

- **Reboot**
Select if the device has to reboot
- **Shutdown**
Select if the device has to shutdown
- **Restart service(s)**
Select if the device has to restart services

3. Press **Update** to start the action.

6.4.5 System settings — Change log level

Change log level

1. Select *System settings — Change log level* and the following page appears:

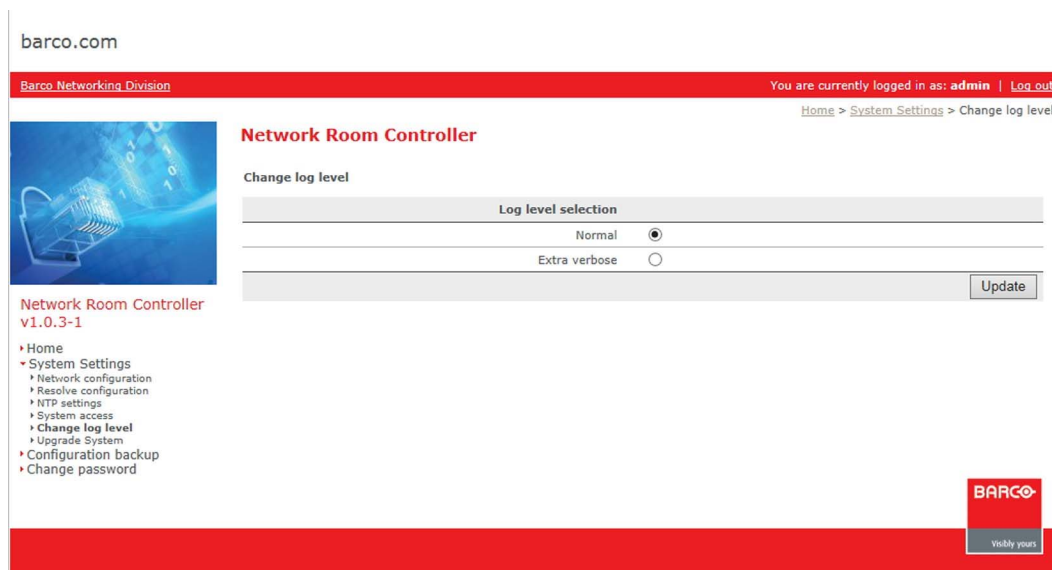


Image 6-7
Change log level page

2. Select the log level you prefer:
- Normal
 - Extra verbose
- Press **Update** to confirm.

6.4.6 System settings — Upgrade system

Upgrade system

1. Select *System settings — Upgrade system* and the following page appears:

6. Web interface for the NRC

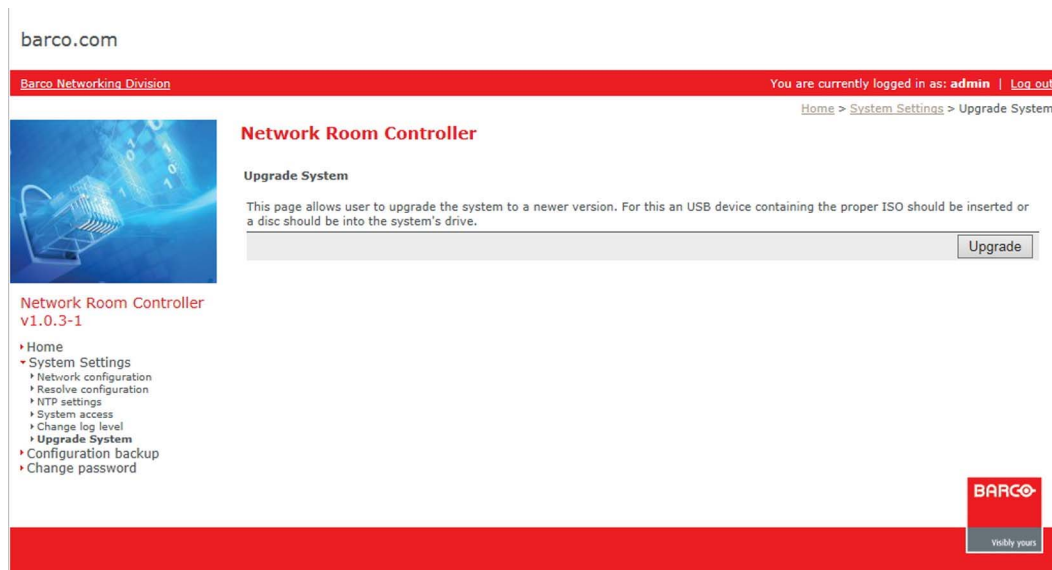


Image 6-8
Upgrade system

2. Insert a USB drive or disc containing the proper ISO into the tray and press **Upgrade** to start the upgrade.



Remove the USB drive or disc before reboot.

6.5 Web interface — Configuration backup

Log in

You need to be logged in as administrator to view the configuration backup or change its settings, see "How to log in", page 40, Administrator log in.

6.5.1 Configuration backup — Logs

Logs

1. Select *Configuration backup — Logs* and the following page appears:

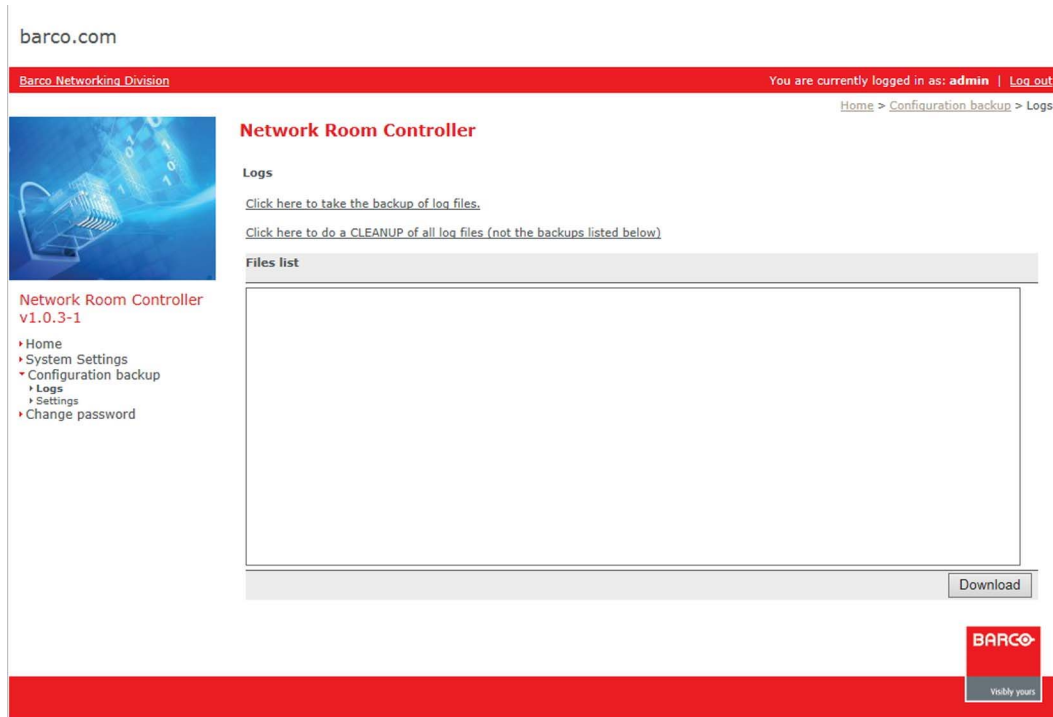


Image 6-9
Configuration backup — Logs

When you click on **Click here to take the backup of log files**, a backup/archive of the system's log files will be created.

A new *tar.gz* file will appear in the "Files list".

2. To download such a *tar.gz* file: select the desired archive and press **Download**. The archive will contain all the files that are located in [/var/log/](#)
3. To clean up the log files: click on **Click here to do a CLEANUP of all log files (not the backups listed below)**. Only the current log files will be deleted, not the *tar.gz* files.

6.5.2 Configuration backup — Settings

Settings

1. Select *Configuration backup — Settings* and the following page appears:

6. Web interface for the NRC

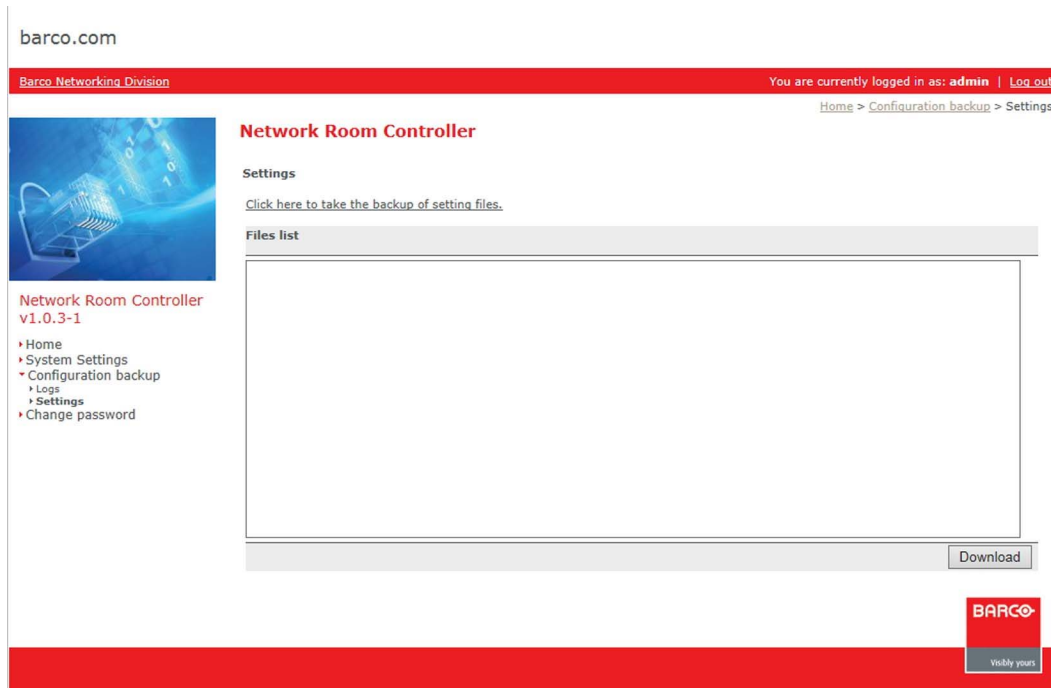


Image 6-10
Configuration backup — Settings

When you click on **Click here to take the backup of setting files**, a backup/archive of the system's setting files will be created.

A new *tar.gz* file will appear in the "Files list".

2. To download such a *tar.gz* file: select the desired archive and press **Download**. The archive will contain all the files that are located in [/etc/](#)

6.6 Web interface — Change password

6.6.1 Change password in User mode

User Access

You need to be logged in as Barco user to change the password in Barco mode:

Log in as Barco user, see "How to log in", page 40, Barco log in.

Password change

1. Select *Change password* and the following page appears:

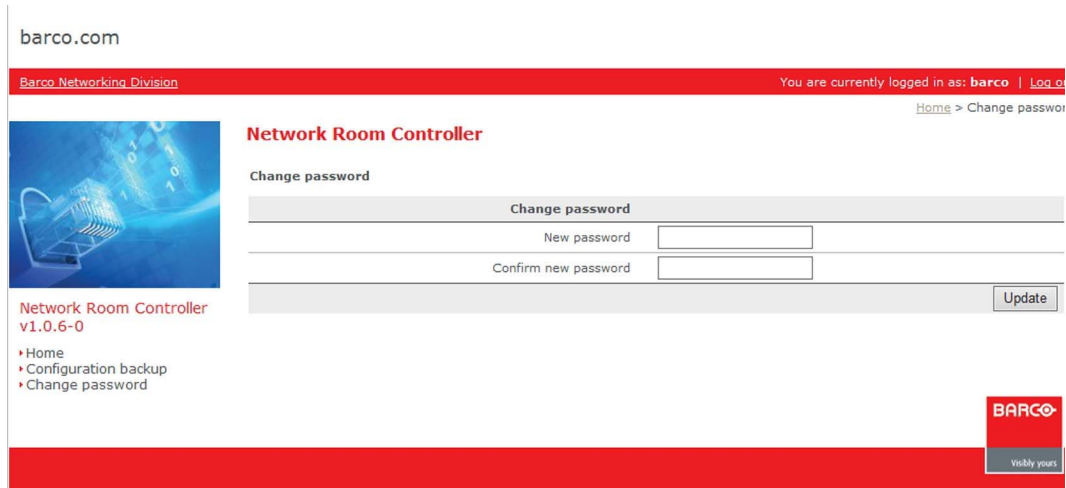


Image 6-11
Change password _ user mode

- **Create a new password:**
Insert the new password for the current login.
- **Confirm new password:**
Repeat the new password for the current login.

2. Press **Update** to change the password.

6.6.2 Change password in administrator mode

Administrator Access

You need to be logged in as administrator to change the password in administrator mode:
Log in as administrator, see "How to log in", page 40, Administrator log in.

Password change

1. Select *Change password* and the following page appears:

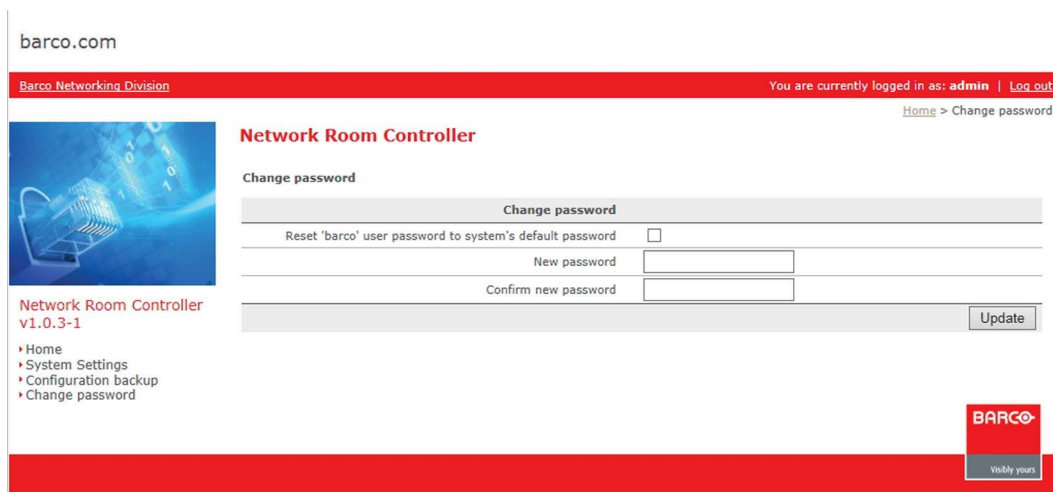


Image 6-12
Change password _ administrator mode

You may enable **Reset 'barco' user password to system's default password** to reset the password of the Barco account to its default.

6. *Web interface for the NRC*

Or,
you may

- Create a **new password**:
Insert the new password for the current login.
- **Confirm new password**:
Repeat the new password for the current login.

2. Press **Update** to change the password.

7. IMPORTANT INFORMATION

7.1 Legal disclaimer

Disclaimer notice

Although every attempt has been made to achieve technical accuracy in this document, we assume no responsibility for errors that may be found. Our goal is to provide you with the most accurate and usable documentation possible; if you discover errors, please let us know.

Barco software products are the property of Barco. They are distributed under copyright by Barco NV or Barco Inc., for use only under the specific terms of a software license agreement between Barco NV or Barco Inc. and the licensee. No other use, duplication, or disclosure of a Barco software product, in any form, is authorized.

The specifications of Barco products are subject to change without notice.

Trademarks

All trademarks and registered trademarks are property of their respective owners.

Copyright notice

This document is copyrighted. All rights are reserved. Neither this document, nor any part of it, may be reproduced or copied in any form or by any means - graphical, electronic, or mechanical including photocopying, taping or information storage and retrieval systems - without written permission of Barco.

© 2015 Barco NV all rights reserved.

7.2 Open source license information

Open source license information

Open source license usage

This product contains software components released under an Open Source license. A copy of the source code is available on request by contacting your Barco customer support representative.

EACH SEPARATE OPEN SOURCE SOFTWARE COMPONENT AND ANY RELATED DOCUMENTATION ARE PROVIDED "AS IS" WITHOUT EXPRESS OR IMPLIED WARRANTY INCLUDING, BUT NOT LIMITED TO, THE IMPLIED WARRANTIES OF MERCHANTABILITY AND FITNESS FOR A PARTICULAR PURPOSE. IN NO EVENT SHALL THE COPYRIGHTHOLDER OR ANY OTHER CONTRIBUTOR BE LIABLE FOR DIRECT, INCIDENTAL OR CONSEQUENTIAL DAMAGES, EVEN IF ADVISED OF THE POSSIBILITY OF SUCH DAMAGES. MORE INFORMATION/DETAILS IS TO BE FOUND IN EACH SPECIFIC OPEN SOURCE LICENSE.

Copyright on each Open Source Software component belongs to the respective initial copyright holder, each additional contributor and/or their respective assignee(s), as may be identified in the respective documentation, source code, README file, or otherwise. You shall not remove or obscure or otherwise alter the respective copyrights.

You acknowledge living up to the conditions of each separate Open Source Software license.

A list of the Open Source Software components used is available in the applicable EULA, through the (customer section of the) Barco website or through other (online) means.

7. Important information

A. NRC CLIENT API

Overview

- Introduction

A.1 Introduction

Introduction

The NRC Client API allows the user to remotely control the NRC system via sending the API commands (i.e. XML commands) to the NRC Server software. The NRC API not only provides you all functionality currently available in NRC Client GUI plus even more functionality.

The API commands can be sent only after the connection is established between NRC Server software and NRC API and that the client is authenticated by the NRC Server software.

To know about the functionality available via NRC API and how to send the API commands, see the NRC API manual K5903126.

B. WINDOWS 8 SETTING

Overview

- Windows 8 boot straight to the desktop
- Setting network connection priority

B.1 Windows 8 boot straight to the desktop

How to make Windows 8 boot straight to desktop on starts up?

1. Search for *Schedule tasks* in Windows 8 start menu by doing following:
 - a) press the Windows key (on keyboard or virtual keyboard);
 - b) type *Schedule* in the Search panel;
 - c) press **Settings**
 - d) press **Schedule tasks**.
2. In the appearing *Task Scheduler* dialog, press **Create Task** in the Action Panel.
3. In the appearing *Create Task* dialog do the followings:
 - a) type *Show Desktop@Start* in the *Name* text box.
 - b) select Windows from the *Configure for* drop-down list.
4. In the *Create Task* dialog, press the tab **Triggers** and then press **New...** at the bottom in the Triggers page.
5. In the appearing *New Trigger* dialog, select *At log on* from *Begin the task* drop-down list.
The New Trigger page refreshes and display the settings for the At log on option. Do not change the default settings on this page.
6. In the *Create Task* dialog, press the tab **Actions** and then press **New...** at the bottom in the Actions page.
7. In the appearing *New Action* dialog, do the followings:
 - a) type *C:\Windows\Explorer.exe* in the *Program/script* text box;
 - b) press **OK**.
8. In the *Create Task* dialog, press the tab **Conditions** and in the Power section, clear the *Start the task on if the computer is on AC power* check box.
9. Press **OK** to complete the Windows 8 boot straight to desktop procedure.
10. Reboot the system – Windows 8 boot straight to the desktop.

B.2 Setting network connection priority

How to set the network connection priority in windows 8?

1. Open the *Network Connections* window.
2. Right click on your Local Area Connection (LAN) or Wireless (WiFi) Network Connection and select properties to open up the properties window of it
3. In the Local Area Connection or Wireless Network Connection properties window, double-click **Internet Protocol Version 4 (TCP/IPv4)**.

B. Windows 8 setting

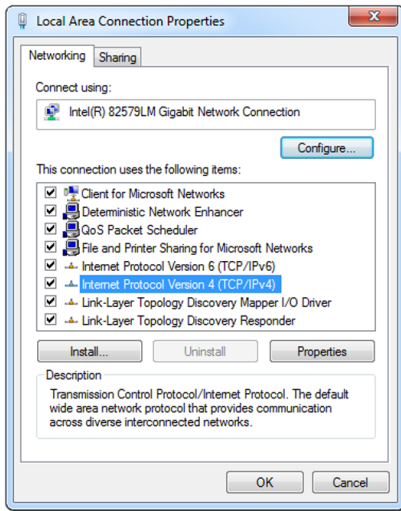


Image B-1
LAN: Internet Protocol Version 4 (TCP/IPv4)

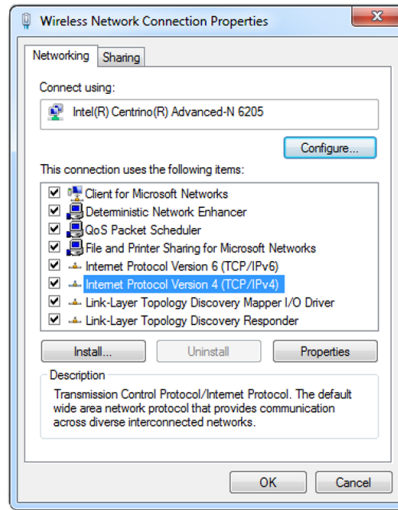


Image B-2
WiFi: Internet Protocol Version 4 (TCP/IPv4)

4. In the Internet Protocol Version 4 (TCP/IPv4) window, single-click **Advanced...**

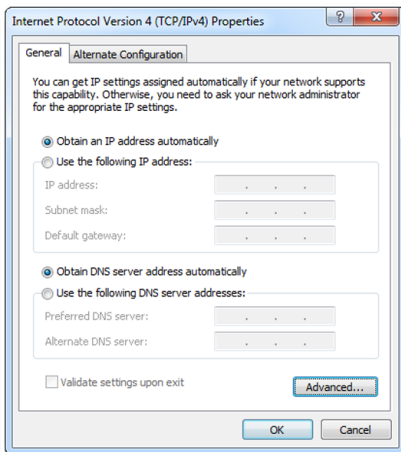


Image B-3
Opening the advanced setting

5. In the Advanced TCP/IP Settings window do the followings:

a) Untick *Automatic metric* checkbox;

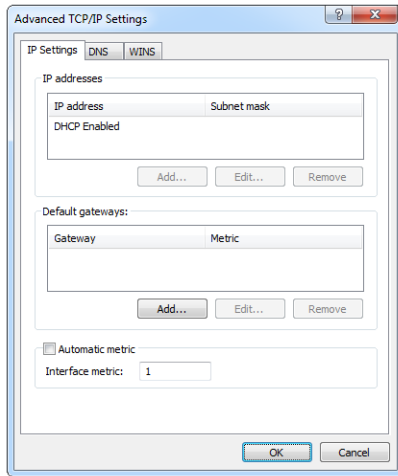


Image B-4
Setting the network connection priority

- b) In the Interface metric textbox, set the priority of the selected network connection as desired;
- c) Click **OK** to finish the network connection priority setting.

C. MOBILE DEVICE SUPPORT

Overview


- Supported Apps

C.1 Supported Apps

Overview

The below list of Apps are supported by ClickShare and can be installed on your mobile device from Google Play or Apple App Store.

Before you can use your mobile device with ClickShare, you have to connect the mobile device Wi-Fi with the ClickShare Base Unit Wi-Fi. Follow the instructions as given in your mobile device user guide.

App	Used on	Logo
ClickShare Presenter	Android and iOS	
Airplay	Apple TV, iPhone, iPod touch, iPad	